

**1**  
**FRONT**

Printing area:W119.29" x H91.73"

**Bleed Line** ————

Make sure to extend the background images or colors all the way to the edge of the black outline.

**Trim Line** - - - - -

Be aware of Safe visible area & keep important images & text inside this line.(Anything left outside the green box may be cut off during trimming.)

**Safe Line** ————

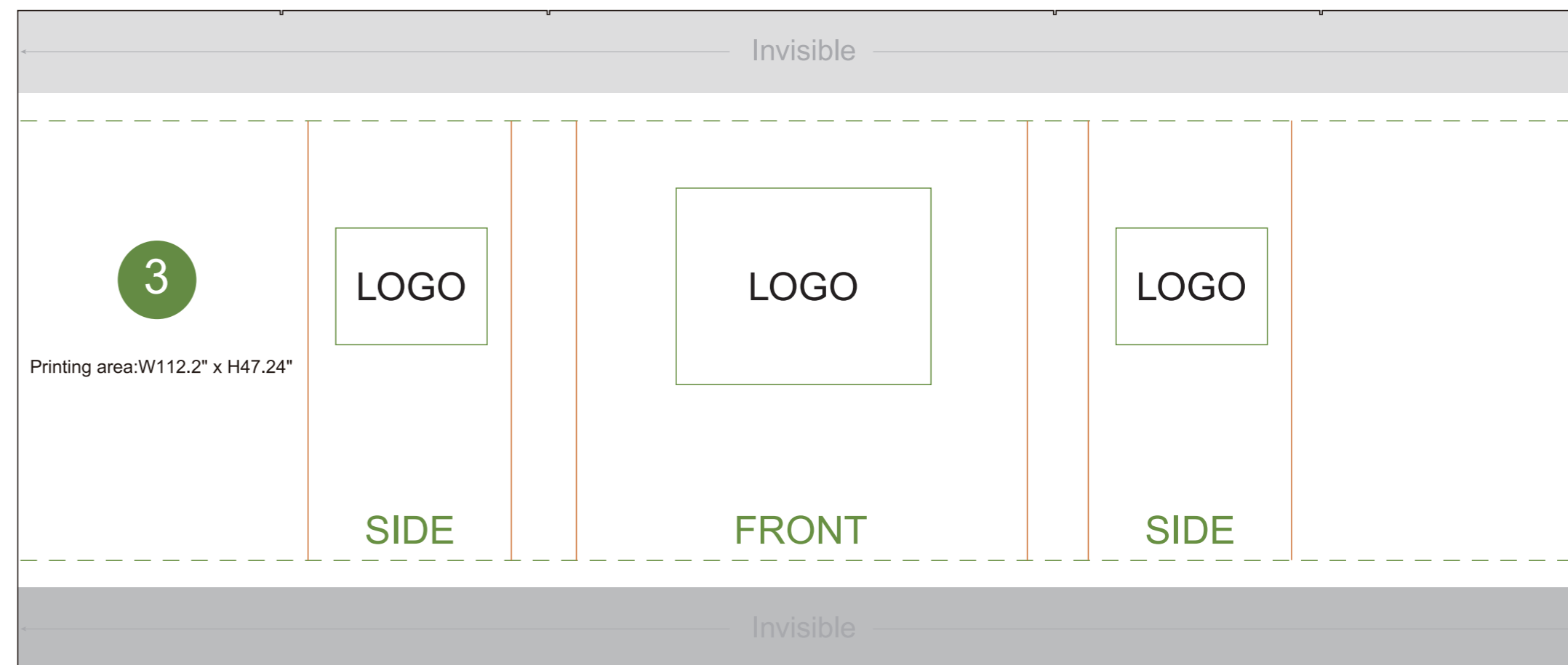
**Fold Line** ————

**1**  
**BACK**

Printing area:W119.29" x H91.73"

**2**  
**FRONT**  
Printing area:W64.17" x H18.11"

**2**  
**BACK**  
Printing area:W64.17" x H18.11"



**AOM Prime Print**

**Graphic Specifications:**

- Use Provided Template: Follow template dimensions exactly
- Resolution: 150 DPI minimum
- Color Mode: CMYK (for print accuracy)
- No Template Lines: Remove any template guidelines before submission
- Images: Embed or link all images in the file
- Fonts: Outline all fonts to avoid compatibility issues

**Accepted File Formats:**

- Photoshop: .PSD, .PSB
- Illustrator: .AI, .EPS
- Flattened Files: .TIFF
- Press Quality PDF: High-resolution PDF (preferred for print)

**Color Matching Service:**

Please note that printed colors may vary slightly from what you see on screen.  
If color accuracy is critical, we recommend adding our Color Matching Service when placing your order.

