



1
FRONT
 Printing area:W119.29" x H91.72"

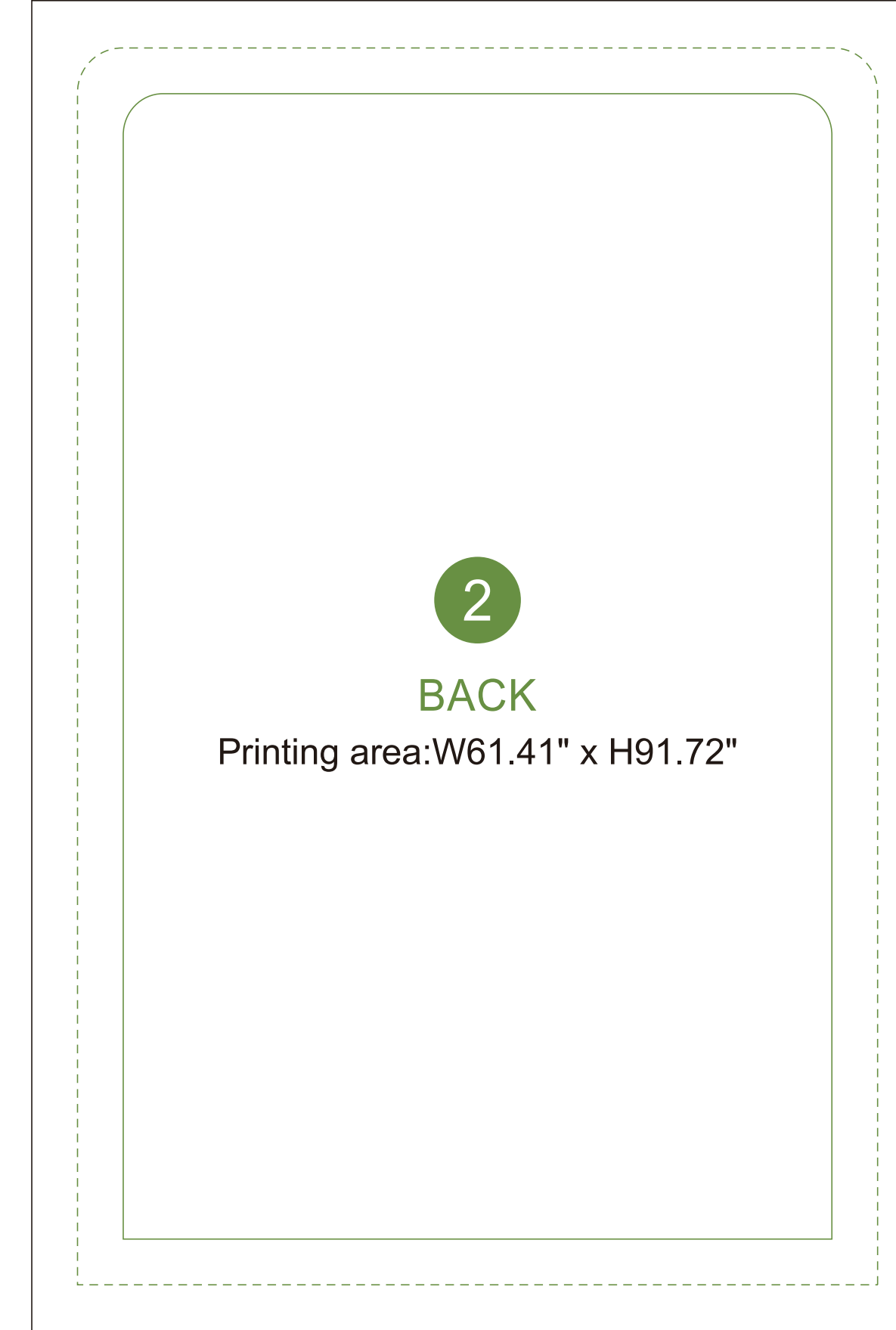


2
FRONT
 Printing area:W61.41" x H91.72"

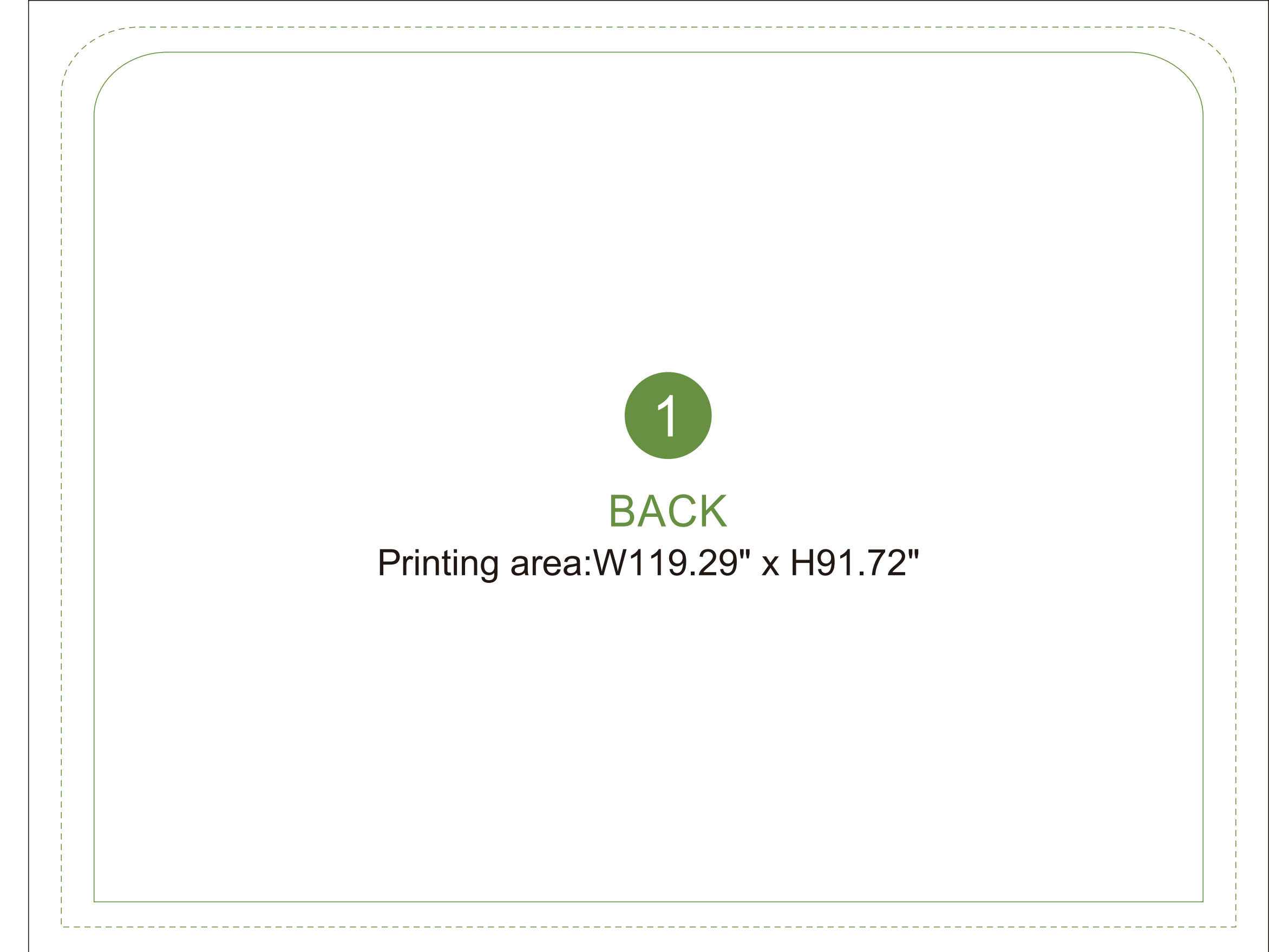
Bleed Line ———
 Make sure to extend the background images or colors all the way to the edge of the black outline.

Trim Line - - - - -
 Be aware of Safe visible area & keep important images & text inside this line.(Anything left outside the green box may be cut off during trimming.)

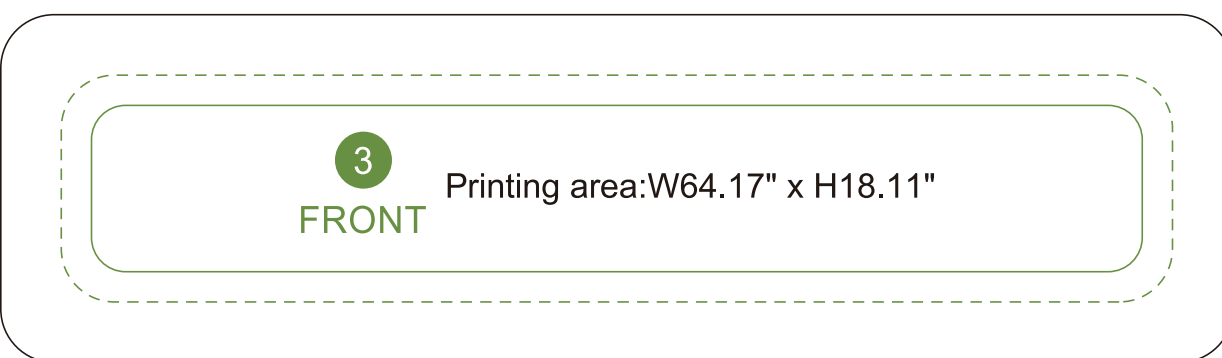
Safe Line ———
Fold Line ———



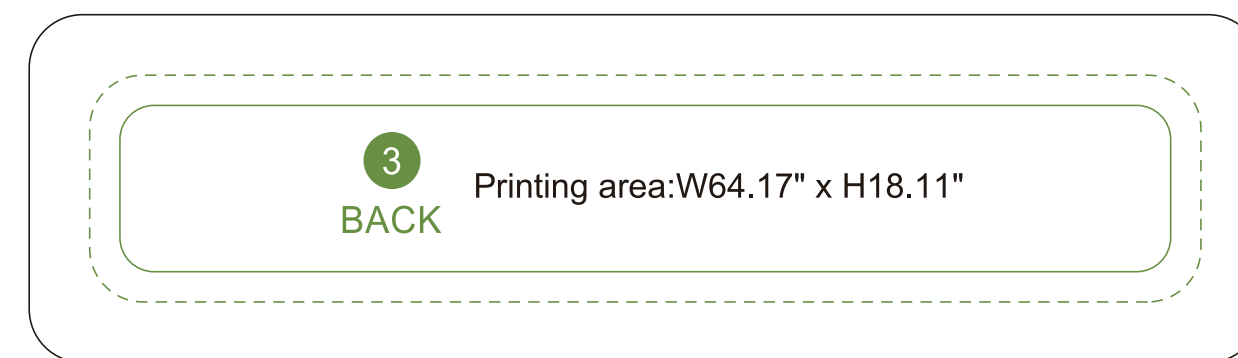
2
BACK
 Printing area:W61.41" x H91.72"



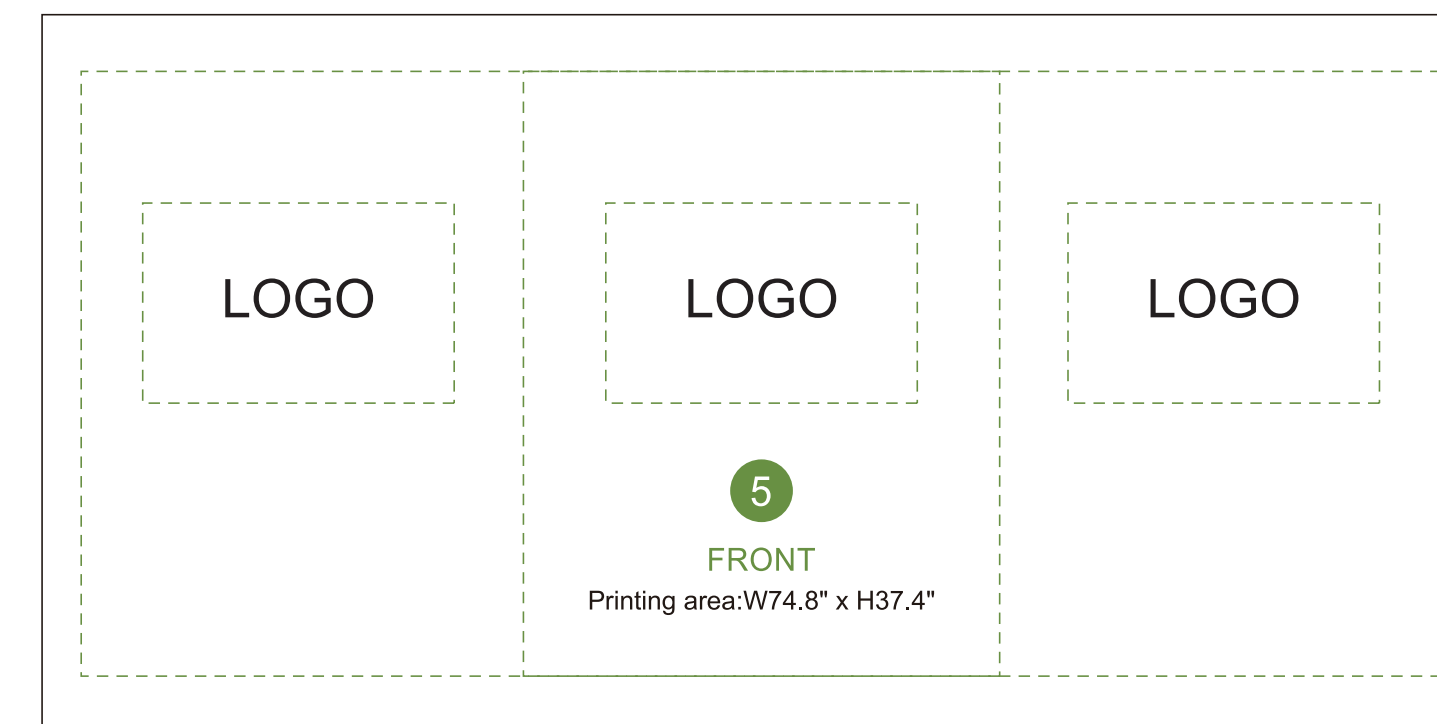
1
BACK
 Printing area:W119.29" x H91.72"



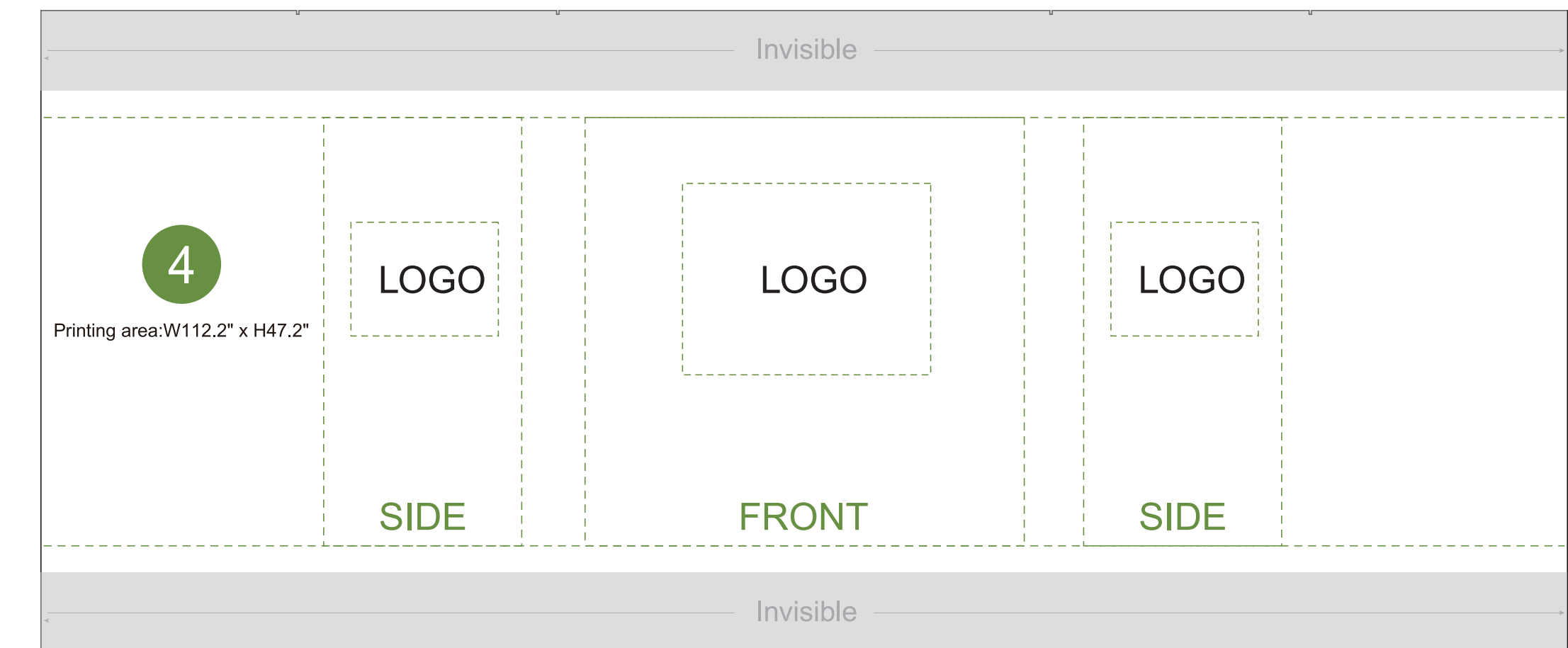
3
FRONT
 Printing area:W64.17" x H18.11"



3
BACK
 Printing area:W64.17" x H18.11"



5
FRONT
 Printing area:W74.8" x H37.4"



4
 Printing area:W112.2" x H47.2"

LOGO

LOGO

LOGO

SIDE

FRONT

SIDE



AOM Prime Print

Graphic Specifications:

- Use Provided Template: Follow template dimensions exactly
- Resolution: 150 DPI minimum
- Color Mode: CMYK (for print accuracy)
- No Template Lines: Remove any template guidelines before submission
- Images: Embed or link all images in the file
- Fonts: Outline all fonts to avoid compatibility issues

Accepted File Formats:

- Photoshop: .PSD, .PSB
- Illustrator: .AI, .EPS
- Flattened Files: .TIFF
- Press Quality PDF: High-resolution PDF (preferred for print)

Color Matching Service:

Please note that printed colors may vary slightly from what you see on screen.
 If color accuracy is critical, we recommend adding our Color Matching Service when placing your order.