

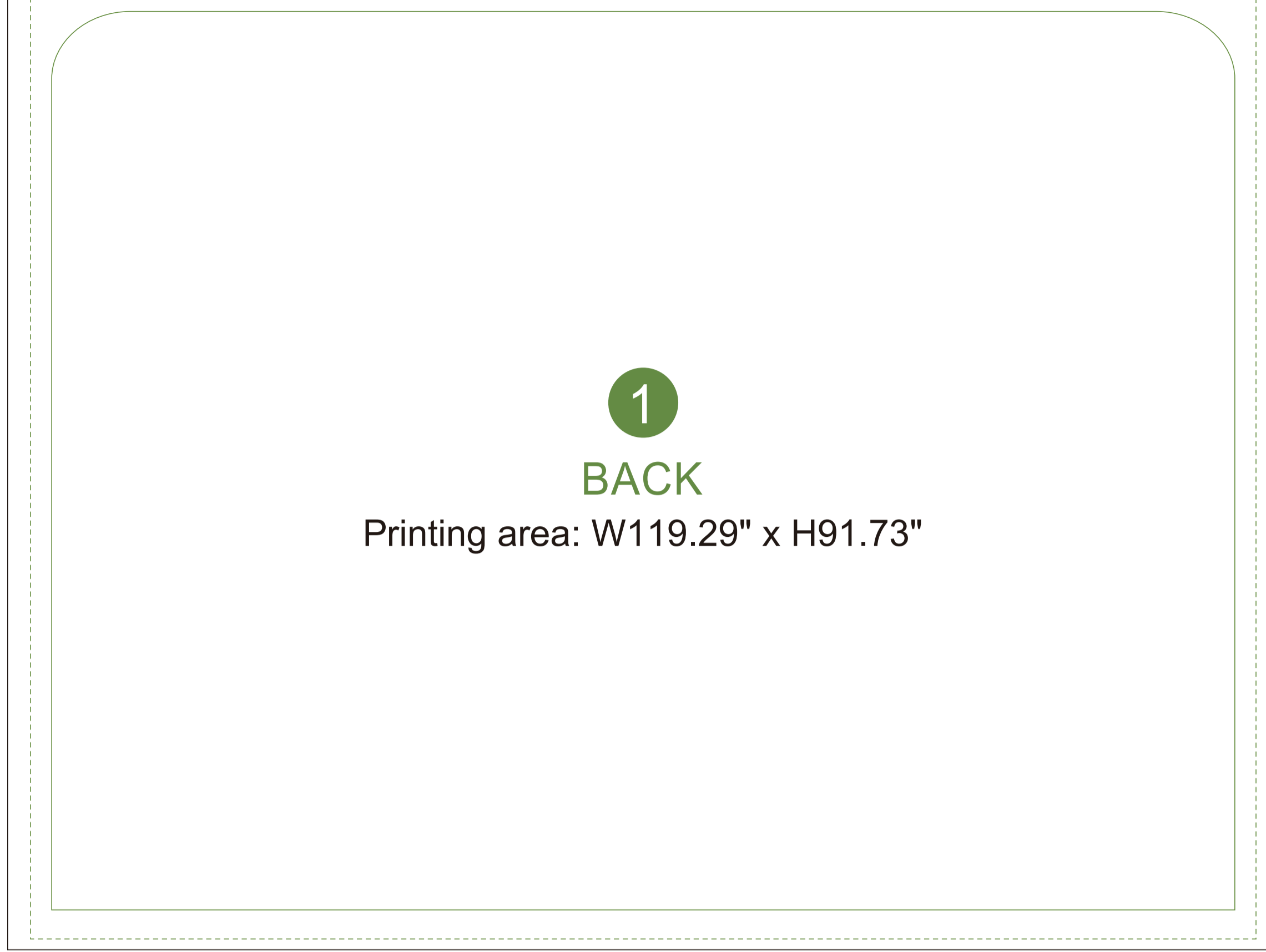
1
FRONT
Printing area: W119.29" x H91.73"

Bleed Line —————
Make sure to extend the background images or colors all the way to the edge of the black outline.

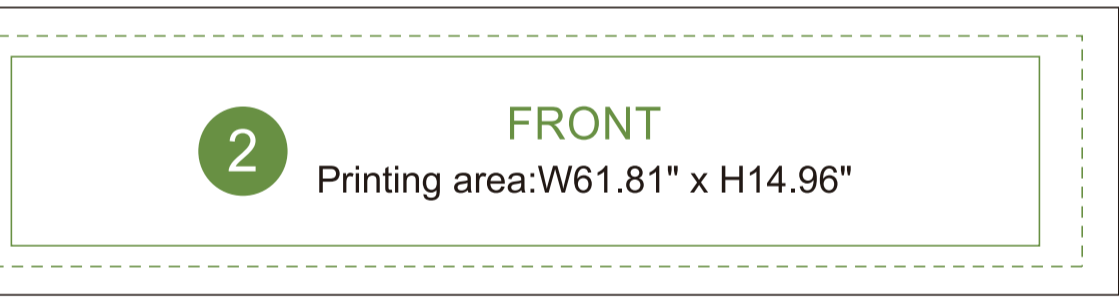
Trim Line - - - - -
Be aware of Safe visible area & keep important images & text inside this line.(Anything left outside the green box may be cut off during trimming.)

Safe Line —————

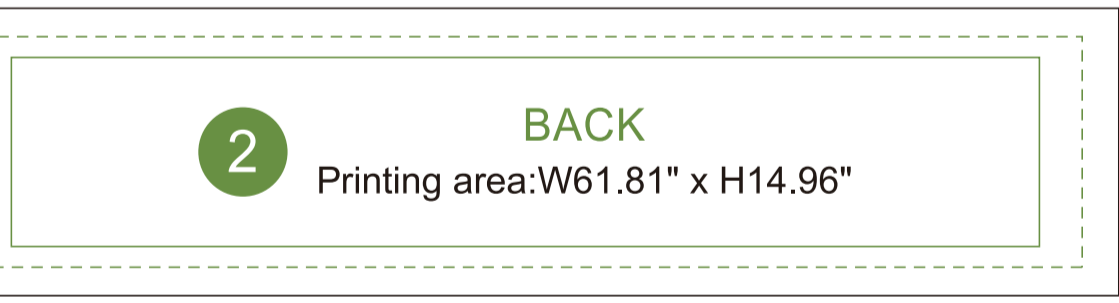
Fold Line —————



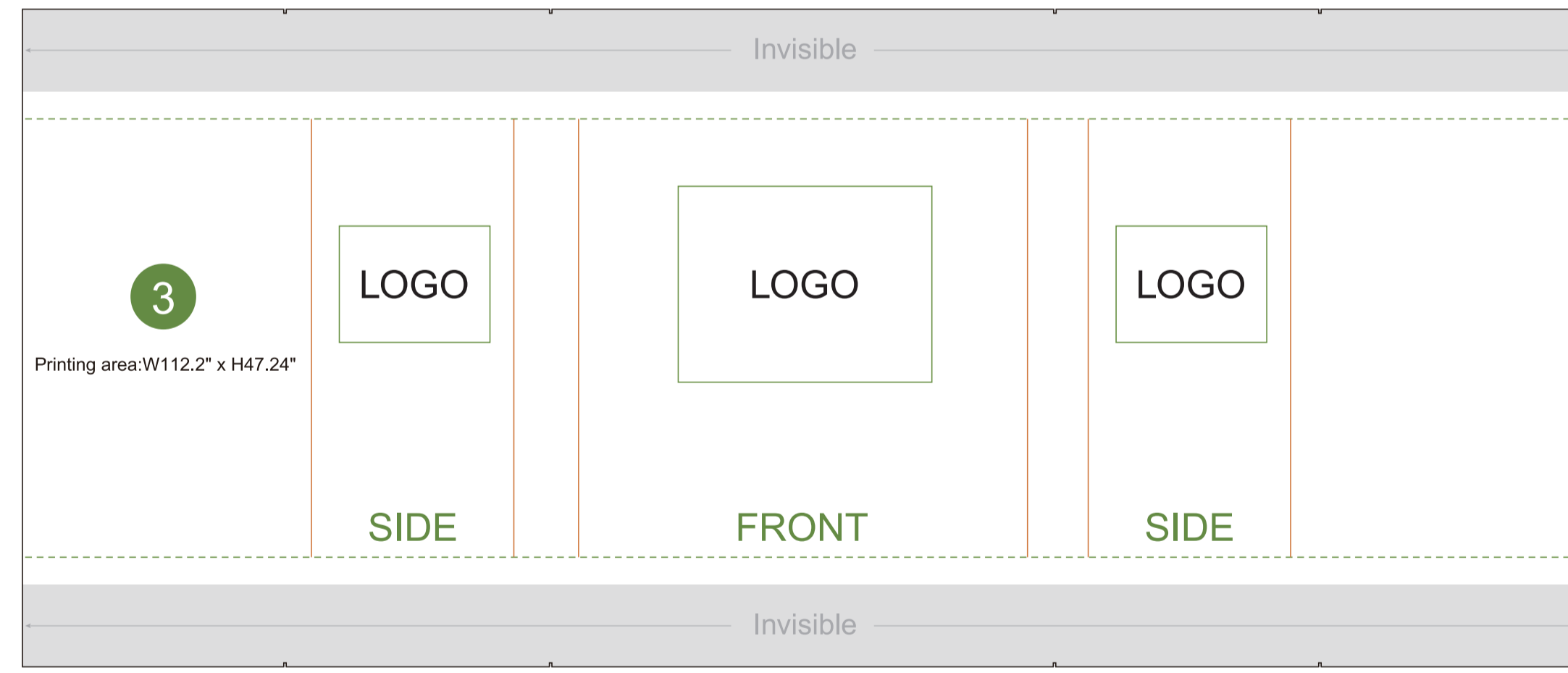
1
BACK
Printing area: W119.29" x H91.73"



2
FRONT
Printing area:W61.81" x H14.96"



2
BACK
Printing area:W61.81" x H14.96"



3
Printing area:W112.2" x H47.24"

LOGO

LOGO

LOGO

SIDE

FRONT

SIDE

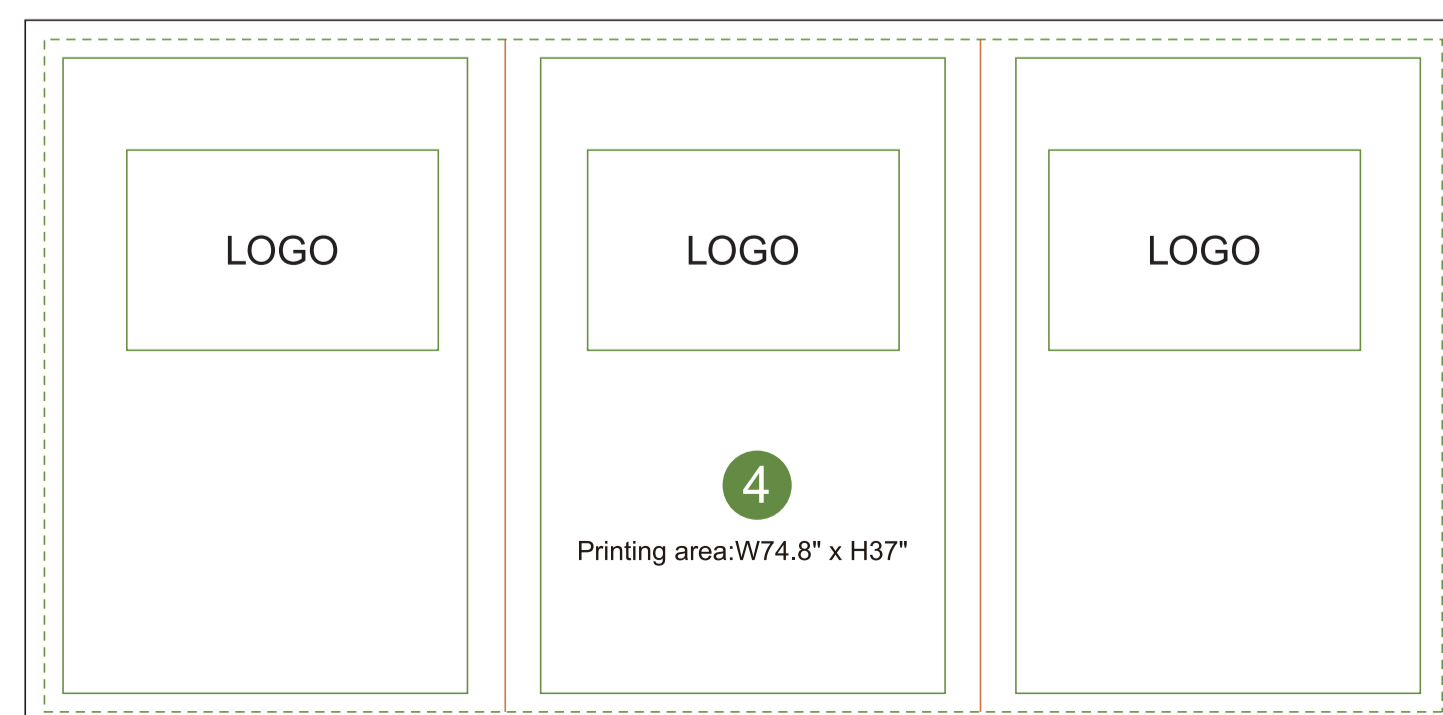


AOM Prime Print

- Graphic Specifications:
- Use Provided Template: Follow template dimensions exactly
 - Resolution: 150 DPI minimum
 - Color Mode: CMYK (for print accuracy)
 - No Template Lines: Remove any template guidelines before submission
 - Images: Embed or link all images in the file
 - Fonts: Outline all fonts to avoid compatibility issues

- Accepted File Formats:
- Photoshop: .PSD, .PSB
 - Illustrator: .AI, .EPS
 - Flattened Files: .TIFF
 - Press Quality PDF: High-resolution PDF (preferred for print)

Color Matching Service:
Please note that printed colors may vary slightly from what you see on screen.
If color accuracy is critical, we recommend adding our Color Matching Service when placing your order.



4
Printing area:W74.8" x H37"

LOGO

LOGO

LOGO