

1
Left Front
Printing area: W179.52"xH92.51"

1
BACK Left
Printing area: W179.52"xH92.51"

Bleed Line _____
Make sure to extend the background images or colors all the way to the edge of the black outline.
Trim Line - - - - -
Be aware of Safe visible area & keep important images & text inside this line. (Anything left outside the green box may be cut off during trimming.)
Safe Line _____
Fold Line _____

3
FRONT Right
Printing area: W179.52"xH92.51"

3
BACK Right
Printing area: W179.52"xH92.51"

Back
Printing area: W110"xH101.5"

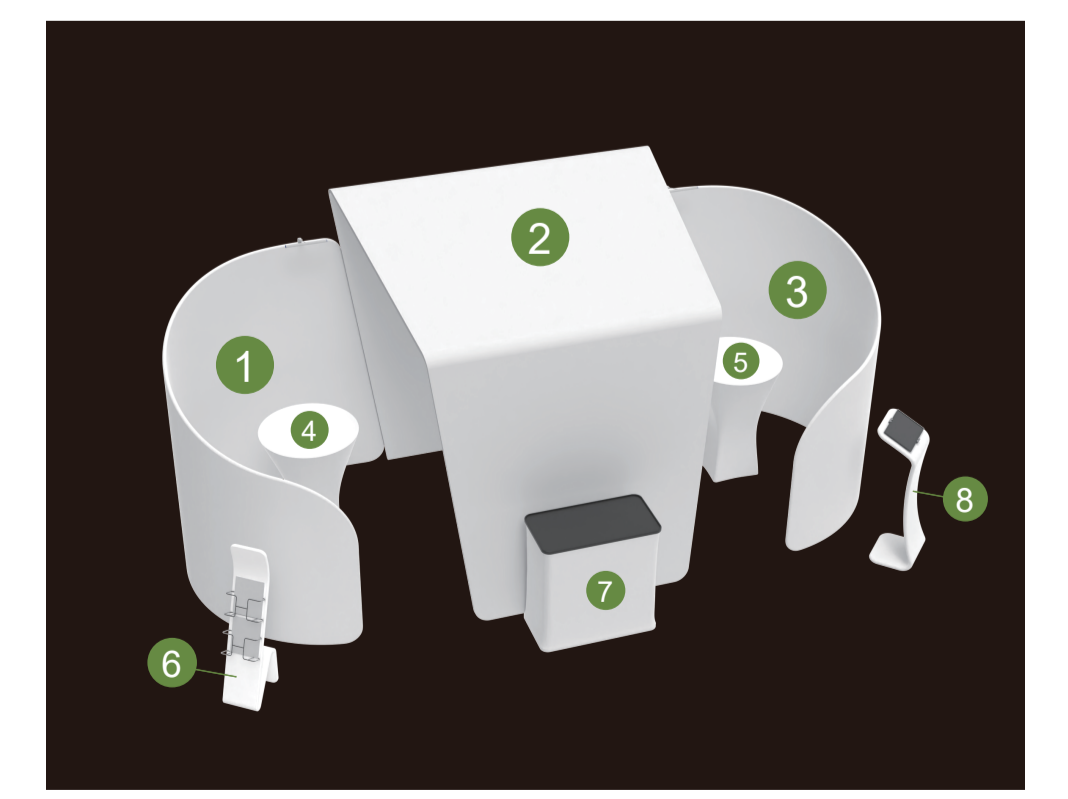
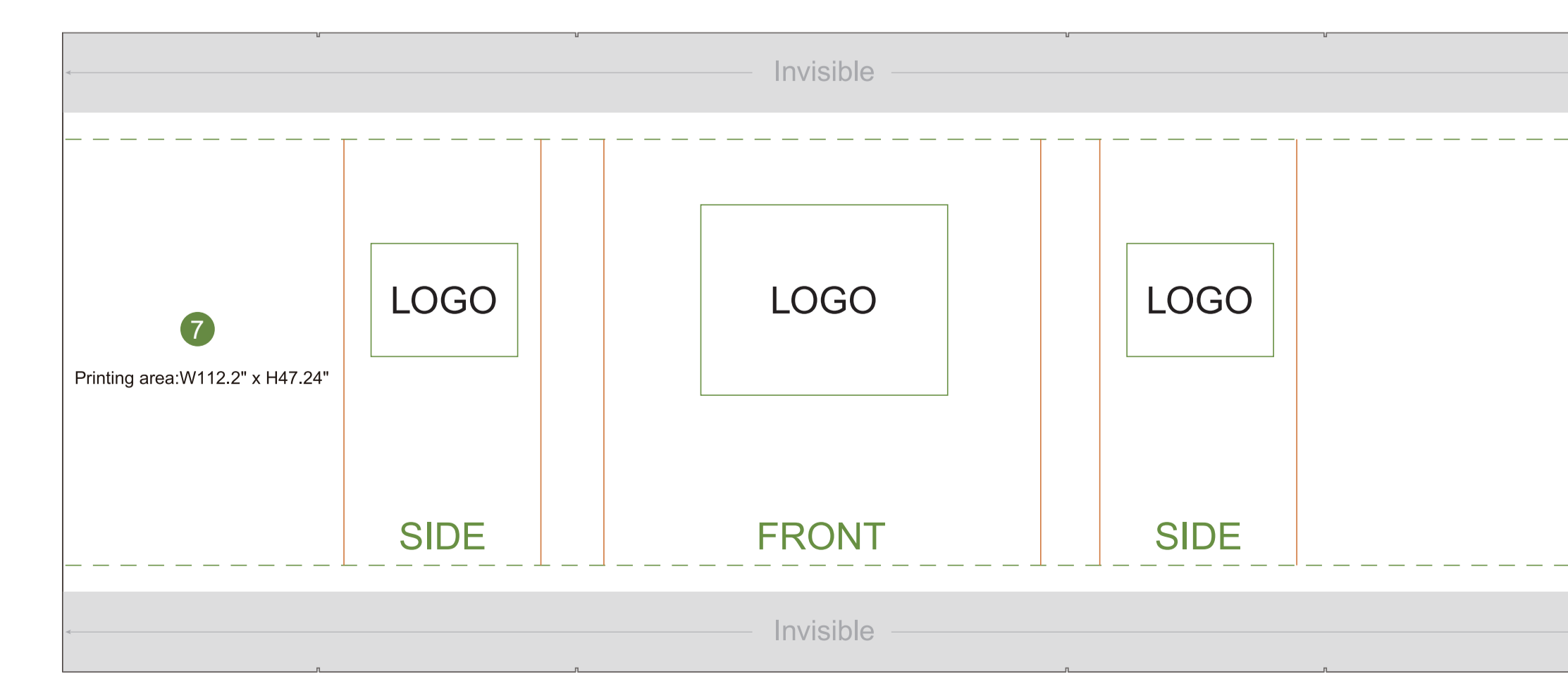
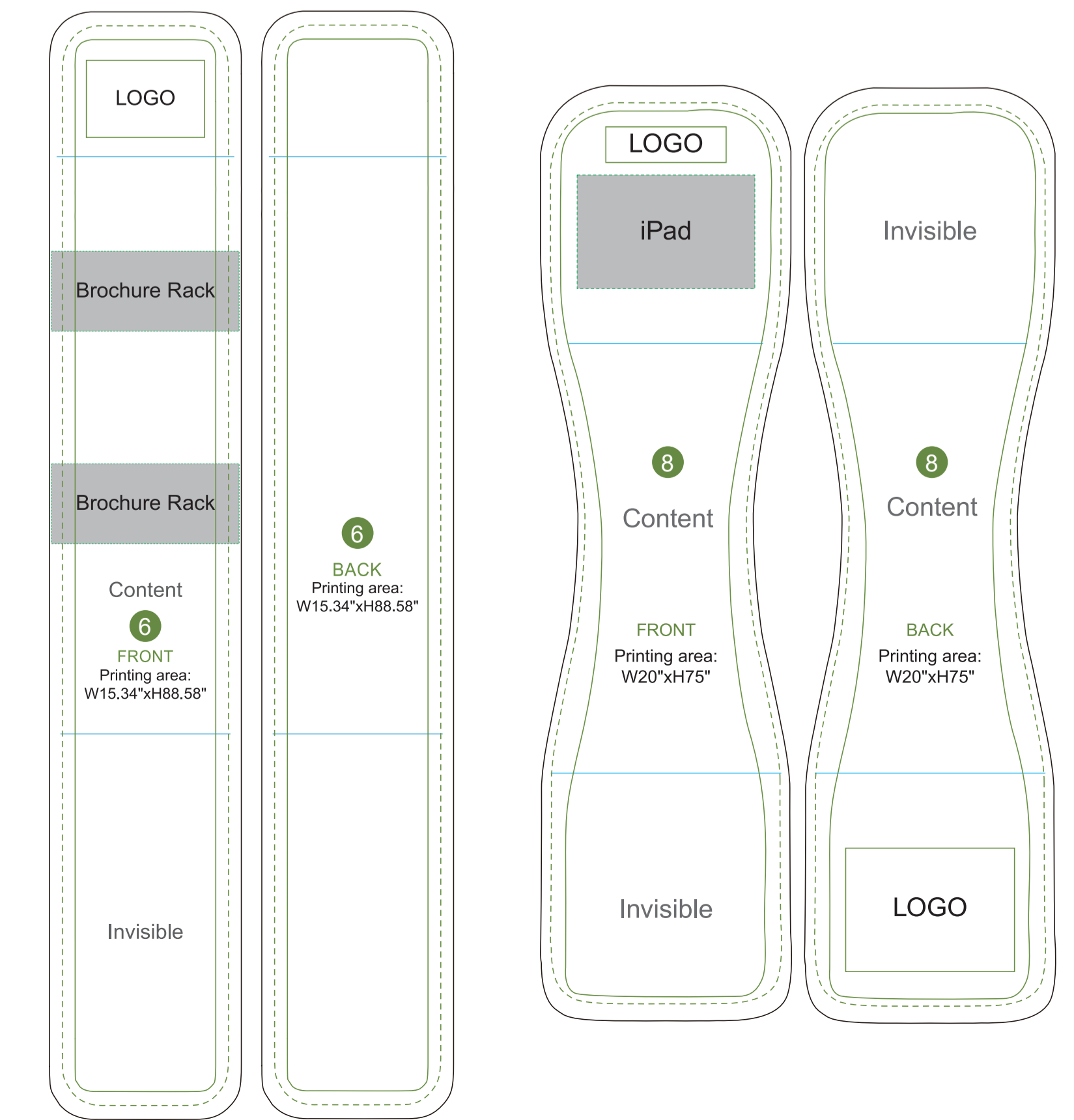
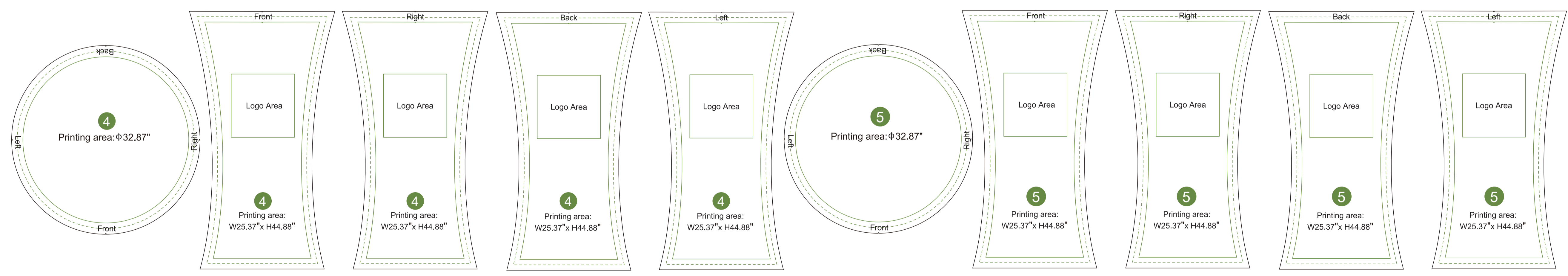
Back
Printing area: W110"xH101.5"

2
Top
Printing area: W113.4"xH94"

2
Top
Printing area: W113.4"xH94"

Outside
40"TV
Front
Printing area: W108.5"xH101.5"

Front
Printing area: W108.5"xH101.5"



AOM Prime Print
Graphic Specifications:
- Use Provided Template: Follow template dimensions exactly
- Resolution: 150 DPI minimum
- Color Mode: CMYK (for print accuracy)
- No Template Lines: Remove any template guidelines before submission
- Images: Embed or link all images in the file
- Fonts: Outline all fonts to avoid compatibility issues
Accepted File Formats:
- Photoshop: PSD, PSB
- Illustrator: AI, EPS
- Flattened Files: TIFF
- Press Quality PDF: High-resolution PDF (preferred for print)
Color Matching Service:
Please note that printed colors may vary slightly from what you see on screen.
If color accuracy is critical, we recommend adding our Color Matching Service when placing your order.