

1
FRONT

Printing area:W119.29" x H91.73"

Bleed Line ———
Make sure to extend the background images or colors all the way to the edge of the black outline.

Trim Line - - - - -
Be aware of Safe visible area & keep important images & text inside this line.(Anything left outside the green box may be cut off during trimming.)

Safe Line ———
Fold Line ———

1
BACK

Printing area:W119.29" x H91.73"

4
FRONT

Printing area:W60.58" x H91.73"

4
BACK

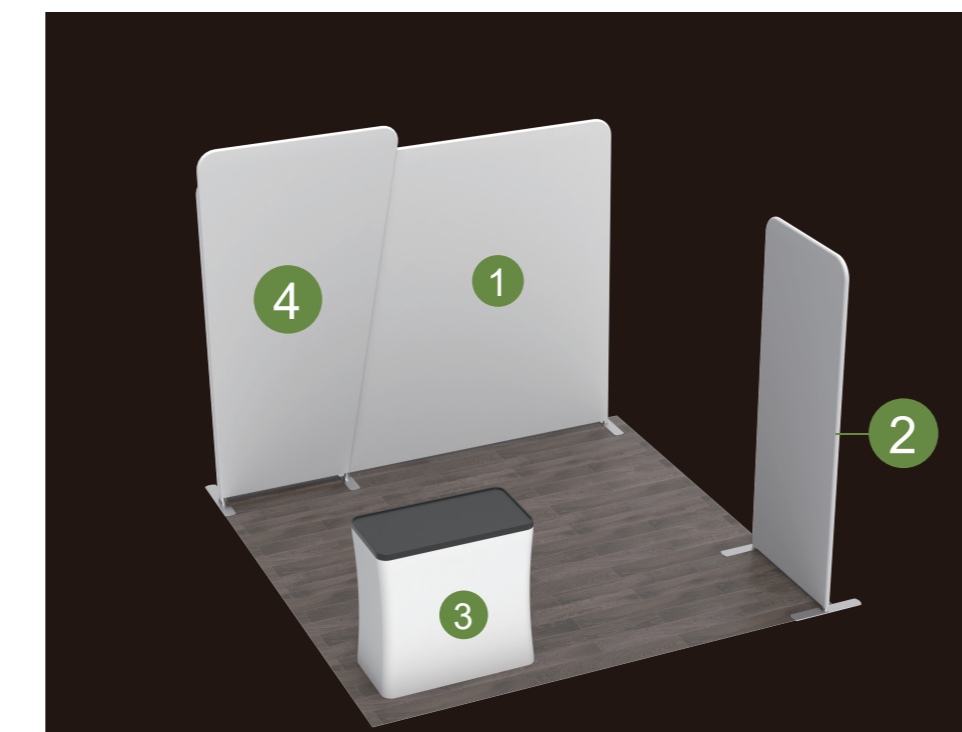
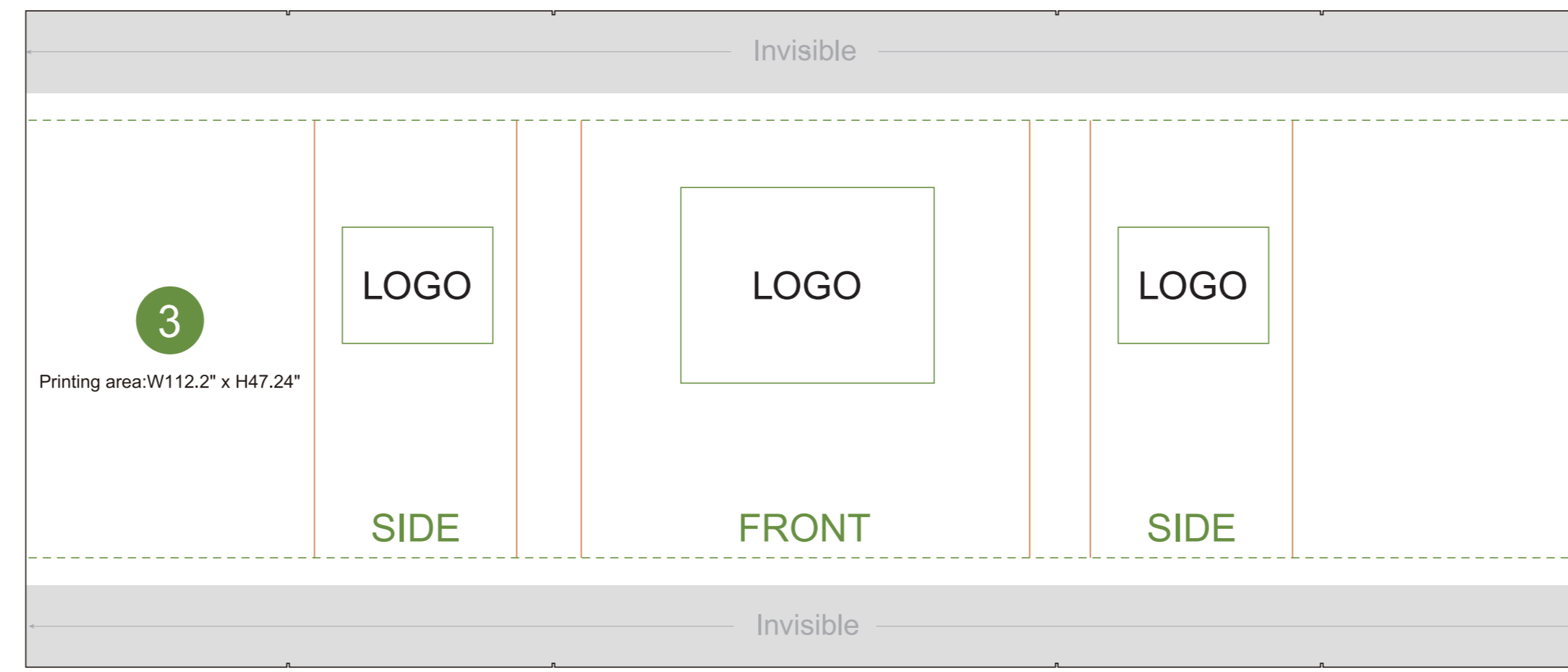
Printing area:W60.58" x H91.73"

2
FRONT

Printing area:W41.73" x H91.73"

2
BACK

Printing area:W41.73" x H91.73"



AOM Prime Print

- Graphic Specifications:
- Use Provided Template: Follow template dimensions exactly
 - Resolution: 150 DPI minimum
 - Color Mode: CMYK (for print accuracy)
 - No Template Lines: Remove any template guidelines before submission
 - Images: Embed or link all images in the file
 - Fonts: Outline all fonts to avoid compatibility issues

- Accepted File Formats:
- Photoshop: .PSD, .PSB
 - Illustrator: .AI, .EPS
 - Flattened Files: .TIFF
 - Press Quality PDF: High-resolution PDF (preferred for print)

Color Matching Service:
Please note that printed colors may vary slightly from what you see on screen.
If color accuracy is critical, we recommend adding our Color Matching Service when placing your order.