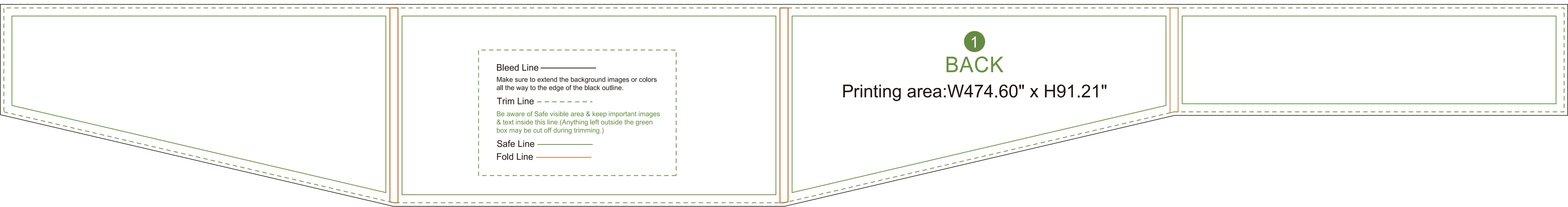


1
FRONT
 Printing area:W474.60" x H91.21"

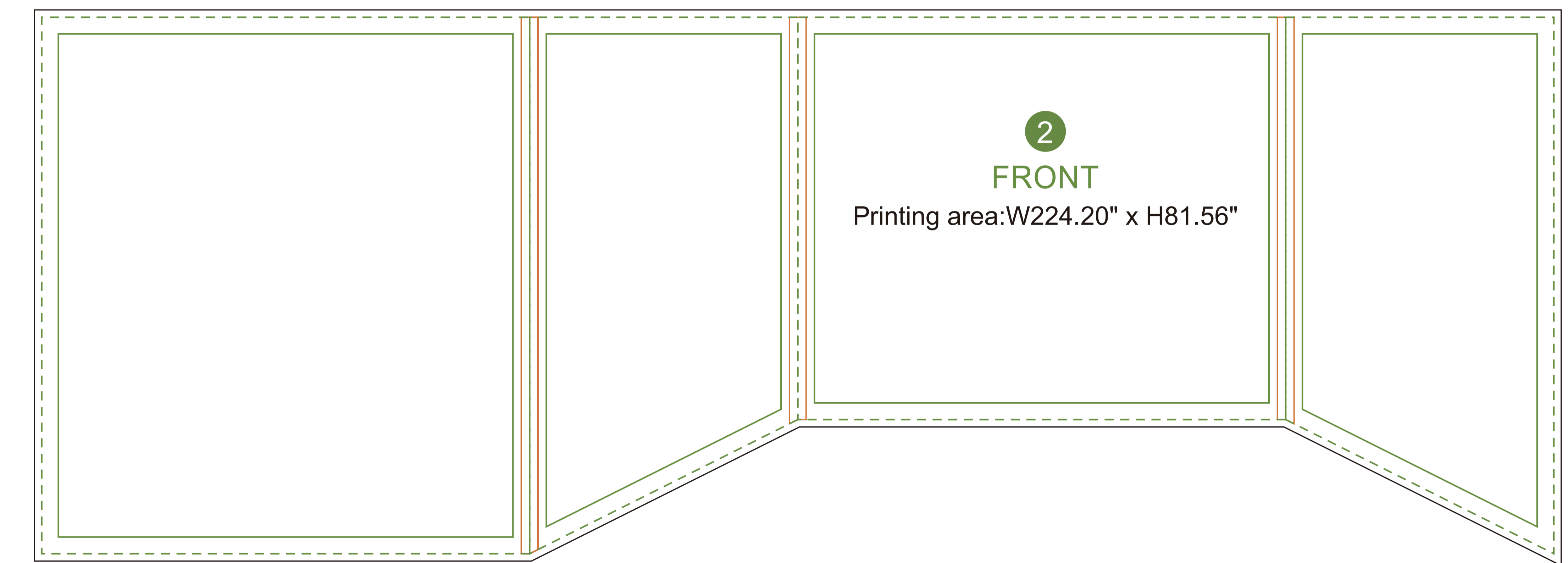


1
BACK
 Printing area:W474.60" x H91.21"

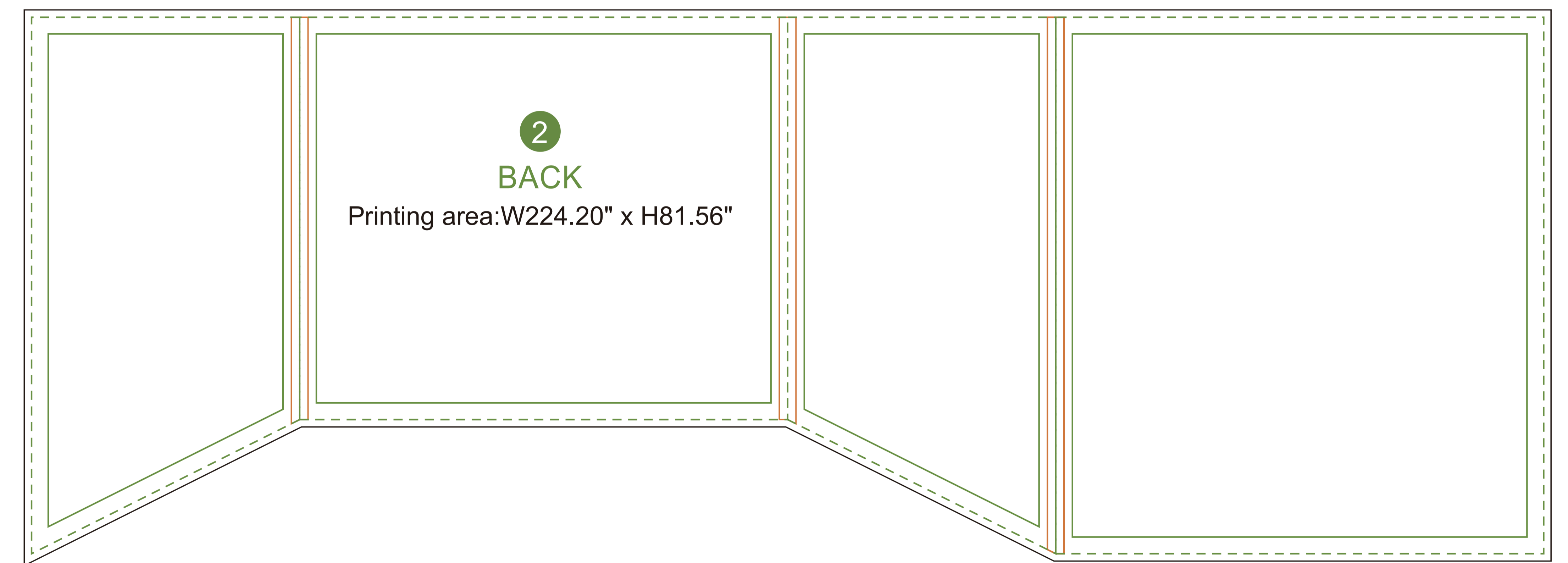
Bleed Line ————
 Make sure to extend the background images or colors all the way to the edge of the black outline.

Trim Line - - - - -
 Be aware of Safe visible area & keep important images & text inside this line.(Anything left outside the green box may be cut off during trimming.)

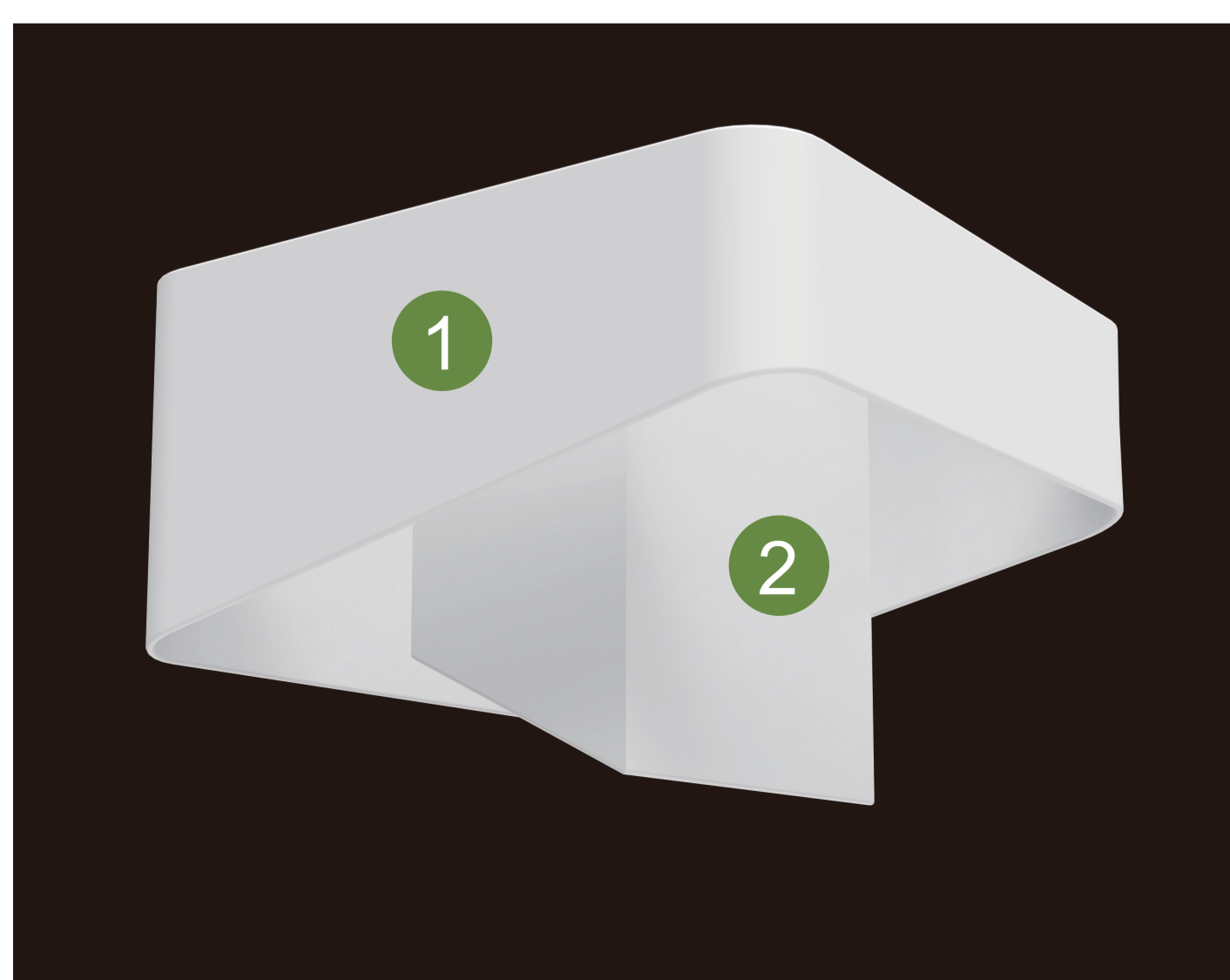
Safe Line ————
Fold Line ————



2
FRONT
 Printing area:W224.20" x H81.56"



2
BACK
 Printing area:W224.20" x H81.56"



AOM Prime Print

- Graphic Specifications:
- Use Provided Template: Follow template dimensions exactly
 - Resolution: 150 DPI minimum
 - Color Mode: CMYK (for print accuracy)
 - No Template Lines: Remove any template guidelines before submission
 - Images: Embed or link all images in the file
 - Fonts: Outline all fonts to avoid compatibility issues

- Accepted File Formats:
- Photoshop: .PSD, .PSB
 - Illustrator: .AI, .EPS
 - Flattened Files: .TIFF
 - Press Quality PDF: High-resolution PDF (preferred for print)

Color Matching Service:
 Please note that printed colors may vary slightly from what you see on screen.
 If color accuracy is critical, we recommend adding our Color Matching Service when placing your order.