

TOP Printing area:W362.99" x H14.79"

1 FRONT

Printing area:W362.99" x H92.70"

**Bleed Line** \_\_\_\_\_  
 Make sure to extend the background images or colors all the way to the edge of the black outline.

**Trim Line** - - - - -  
 Be aware of Safe visible area & keep important images & text inside this line.(Anything left outside the green box may be cut off during trimming.)

**Safe Line** \_\_\_\_\_

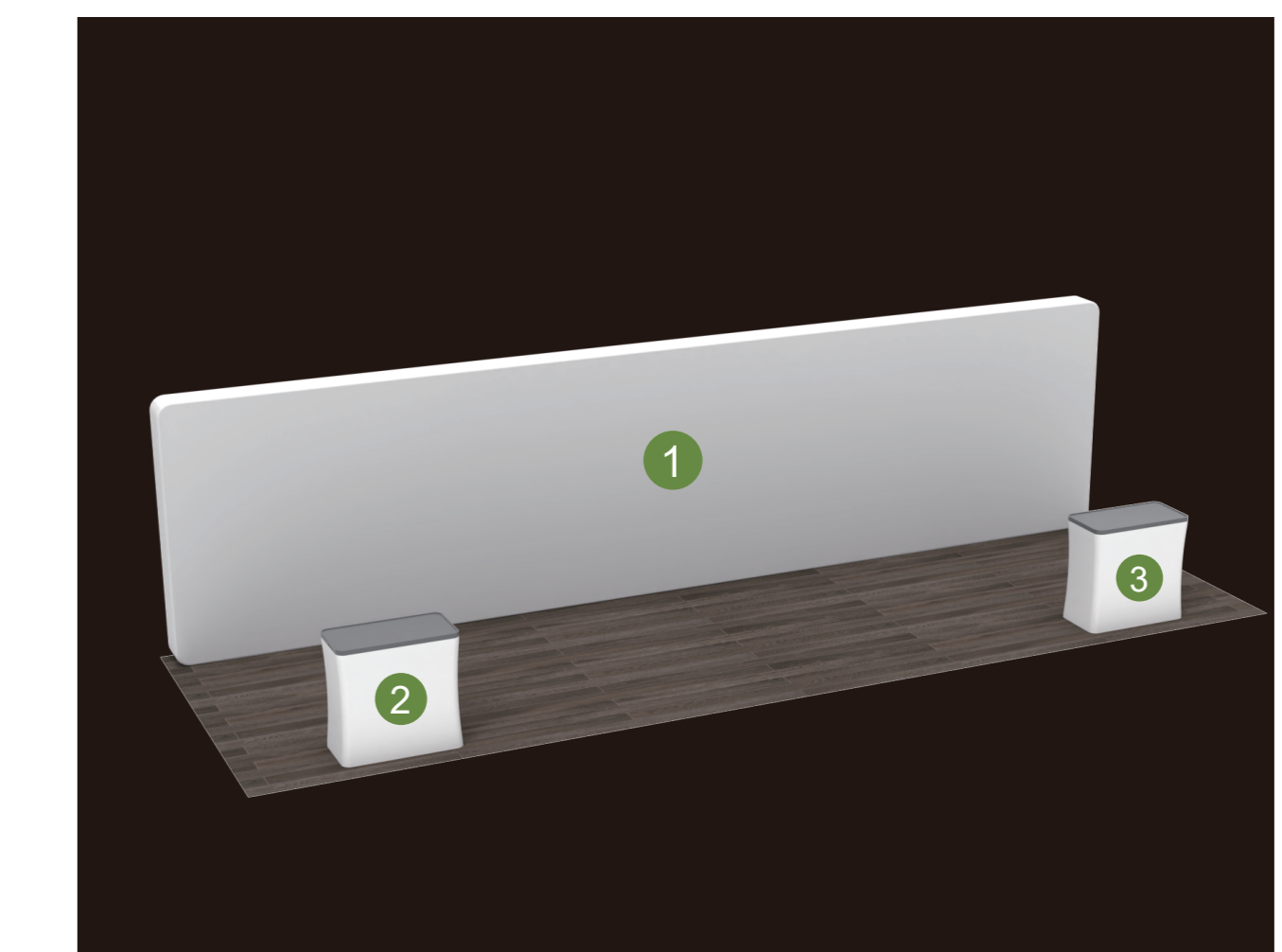
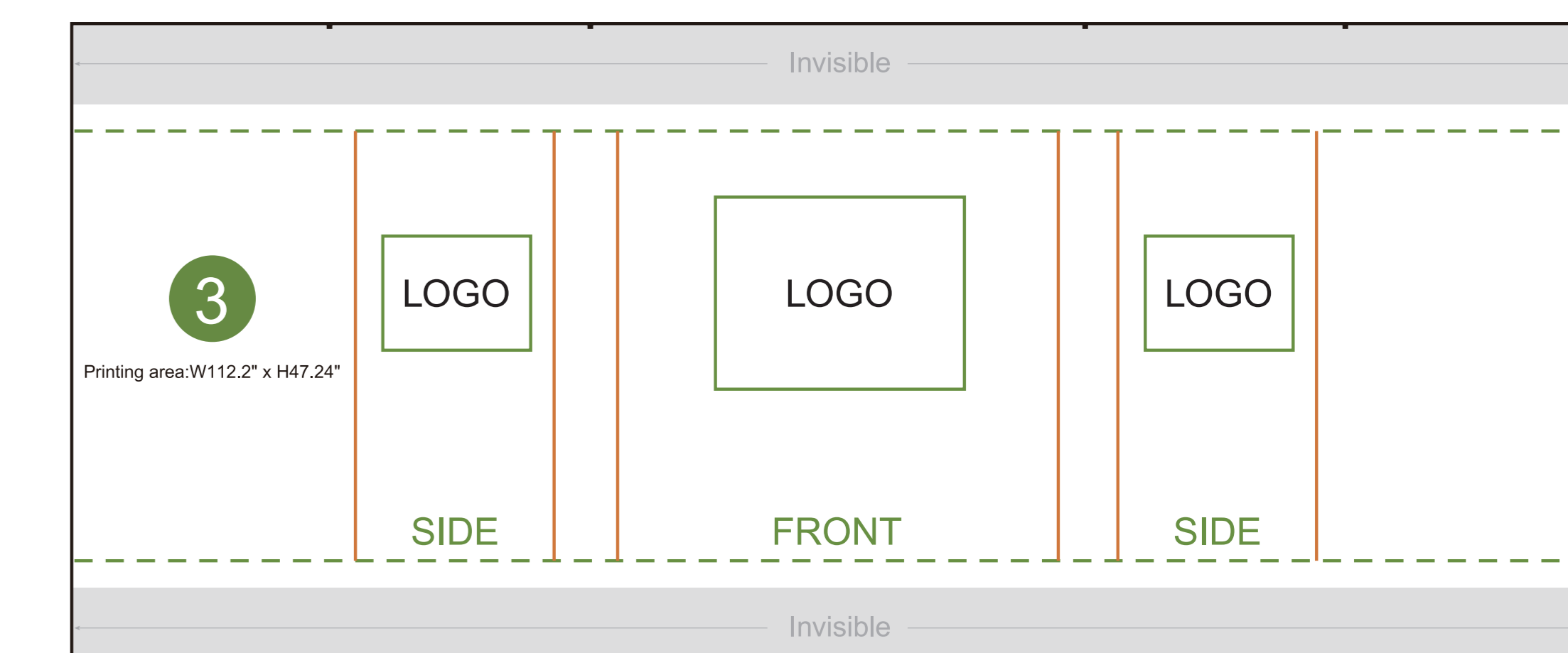
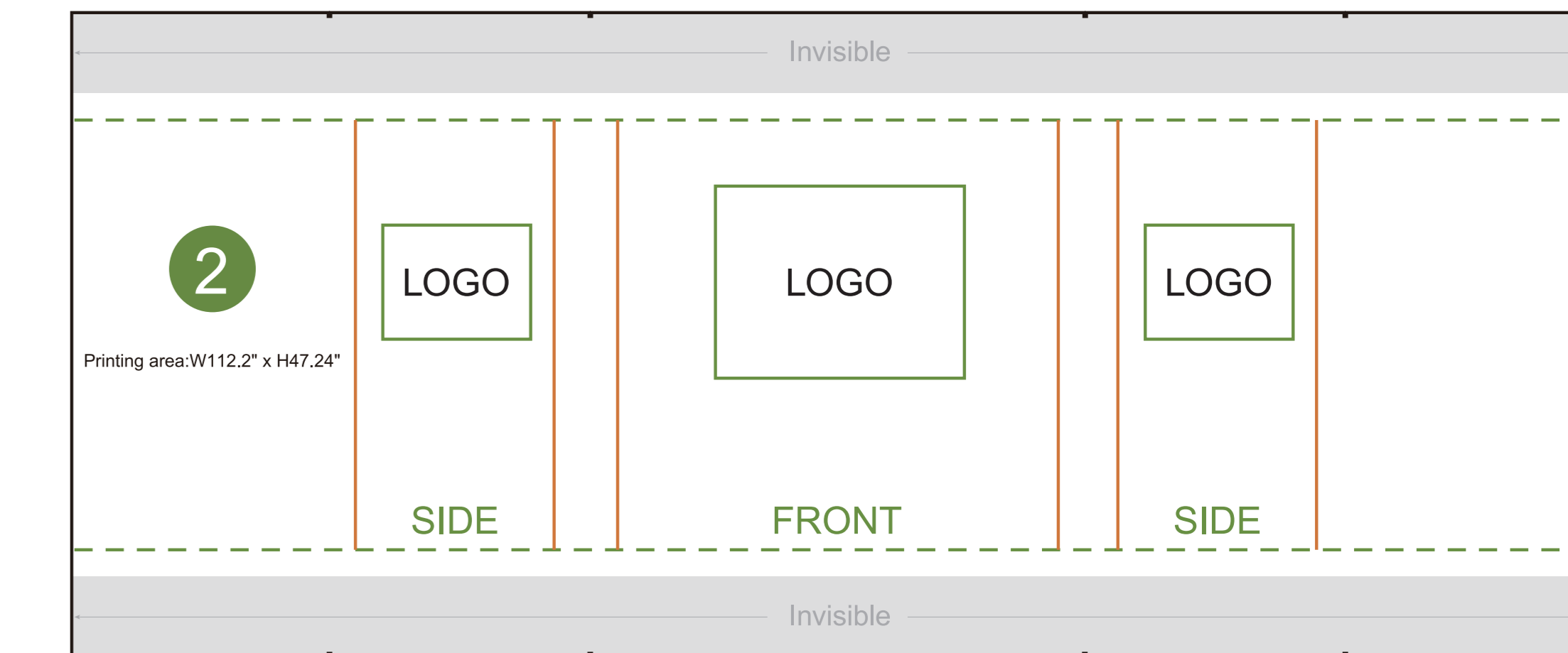
**Fold Line** \_\_\_\_\_

BOTTOM Printing area:W362.99" x H14.79"

1 FRONT

Printing area:W362.99" x H92.70"

RIGHT Printing area:W14.79" x H92.7"



**AOM Prime Print**

- Graphic Specifications:
- Use Provided Template: Follow template dimensions exactly
  - Resolution: 150 DPI minimum
  - Color Mode: CMYK (for print accuracy)
  - No Template Lines: Remove any template guidelines before submission
  - Images: Embed or link all images in the file
  - Fonts: Outline all fonts to avoid compatibility issues

- Accepted File Formats:
- Photoshop: .PSD, .PSB
  - Illustrator: .AI, .EPS
  - Flattened Files: .TIFF
  - Press Quality PDF: High-resolution PDF (preferred for print)

Color Matching Service:  
 Please note that printed colors may vary slightly from what you see on screen.  
 If color accuracy is critical, we recommend adding our Color Matching Service when placing your order.

LEFT Printing area:W14.79" x H92.7"