

1
FRONT
 Printing area: W243.3" x H91.73"

Bleed Line _____
 Make sure to extend the background images or colors all the way to the edge of the black outline.
Trim Line _____
 Be aware of Safe visible area & keep important images & text inside this line. (Anything left outside the green box may be cut off during trimming.)
Safe Line _____
Fold Line _____

1
BACK
 Printing area: W243.3" x H91.73"

3
FRONT
 Printing area:
 W91.74" x H49.95"

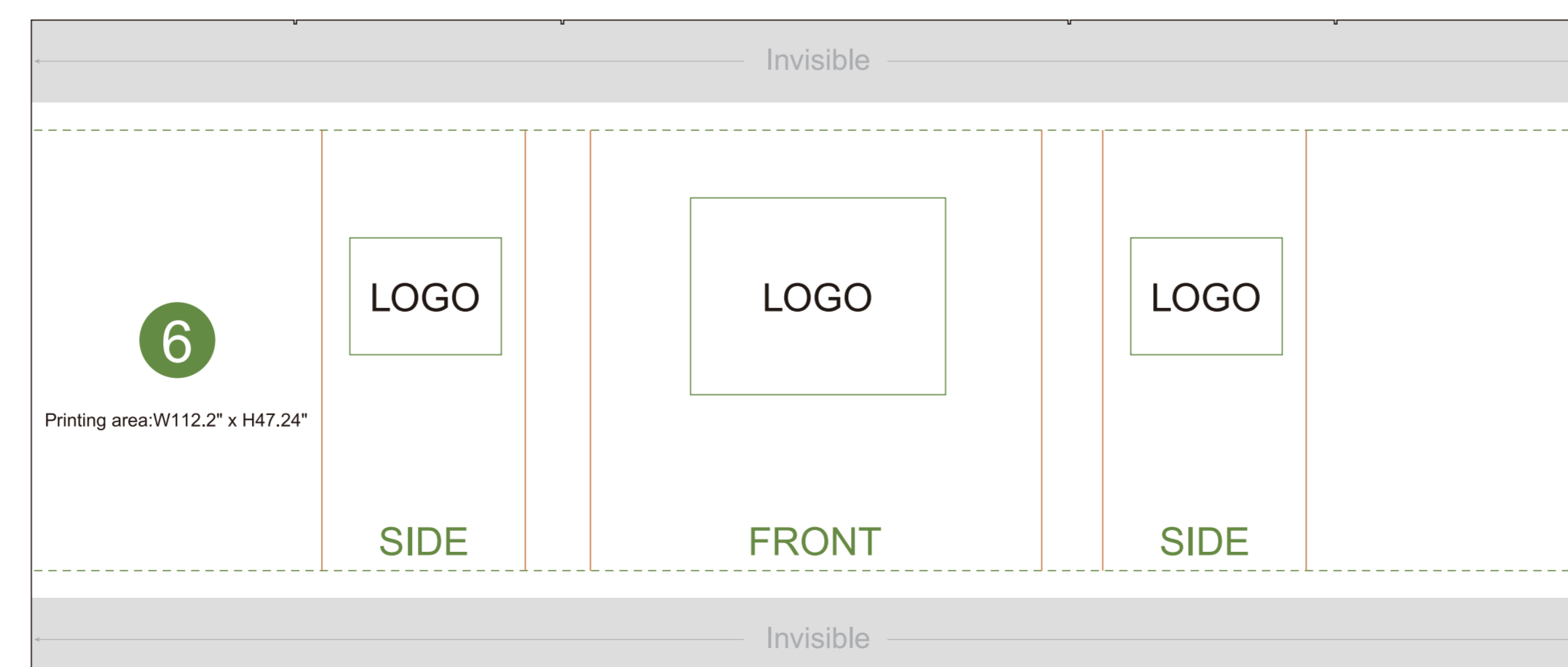
3
BACK
 Printing area:
 W91.74" x H49.95"

4 FRONT Printing area: W59.81" x H13.95"

4 BACK Printing area: W59.81" x H13.95"

5 FRONT Printing area: W114.52" x H13.95"

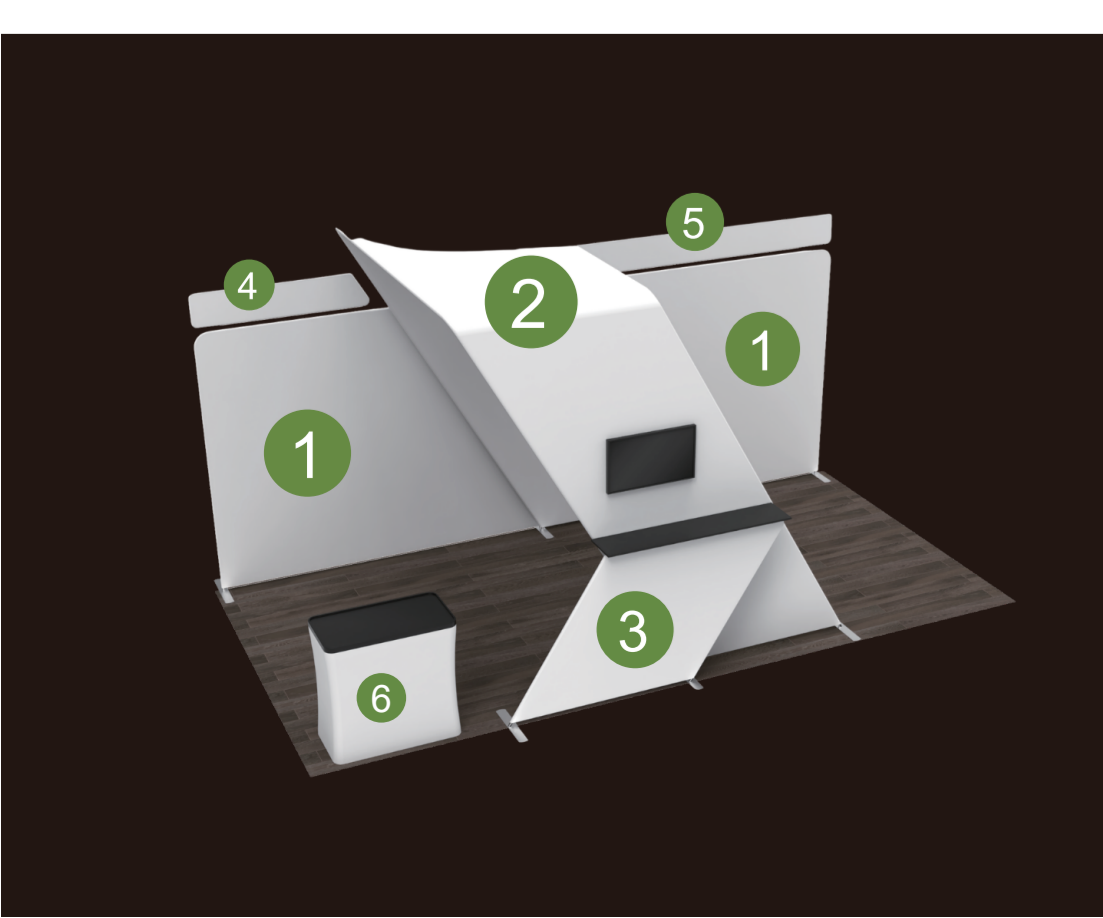
5 BACK Printing area: W114.52" x H13.95"



2
FRONT
 Printing area:
 W131.95" x H350.14"

2
BACK
 Printing area:
 W131.95" x H350.14"

32" TV



AOM Prime Print

- Graphic Specifications:
- Use Provided Template: Follow template dimensions exactly
 - Resolution: 150 DPI minimum
 - Color Mode: CMYK (for print accuracy)
 - No Template Lines: Remove any template guidelines before submission
 - Images: Embed or link all images in the file
 - Fonts: Outline all fonts to avoid compatibility issues

- Accepted File Formats:
- Photoshop: .PSD, .PSB
 - Illustrator: .AI, .EPS
 - Flattened Files: .TIFF
 - Press Quality PDF: High-resolution PDF (preferred for print)

Color Matching Service:
 Please note that printed colors may vary slightly from what you see on screen.
 If color accuracy is critical, we recommend adding our Color Matching Service when placing your order.