

**1**  
**FRONT**

Printing area:W243.31" x H103.31"

**1**  
**BACK**

Printing area:W243.31" x H103.31"

**Bleed Line** ———  
Make sure to extend the background images or colors all the way to the edge of the black outline.

**Trim Line** - - - - -  
Be aware of Safe visible area & keep important images & text inside this line.(Anything left outside the green box may be cut off during trimming.)

**Safe Line** \_\_\_\_\_  
**Fold Line** ———

**2**  
**TOP**

Printing area:  
W50.24" x H50.24"

**2**  
**LEFT**

Printing area:  
W50.24" x H99"

**2**  
**FRONT**

Printing area:  
W50.24" x H99"

**2**  
**RIGHT**

Printing area:  
W50.24" x H99"

**2**  
**BACK**

Printing area:  
W50.24" x H99"

**2**  
**BOTTOM**

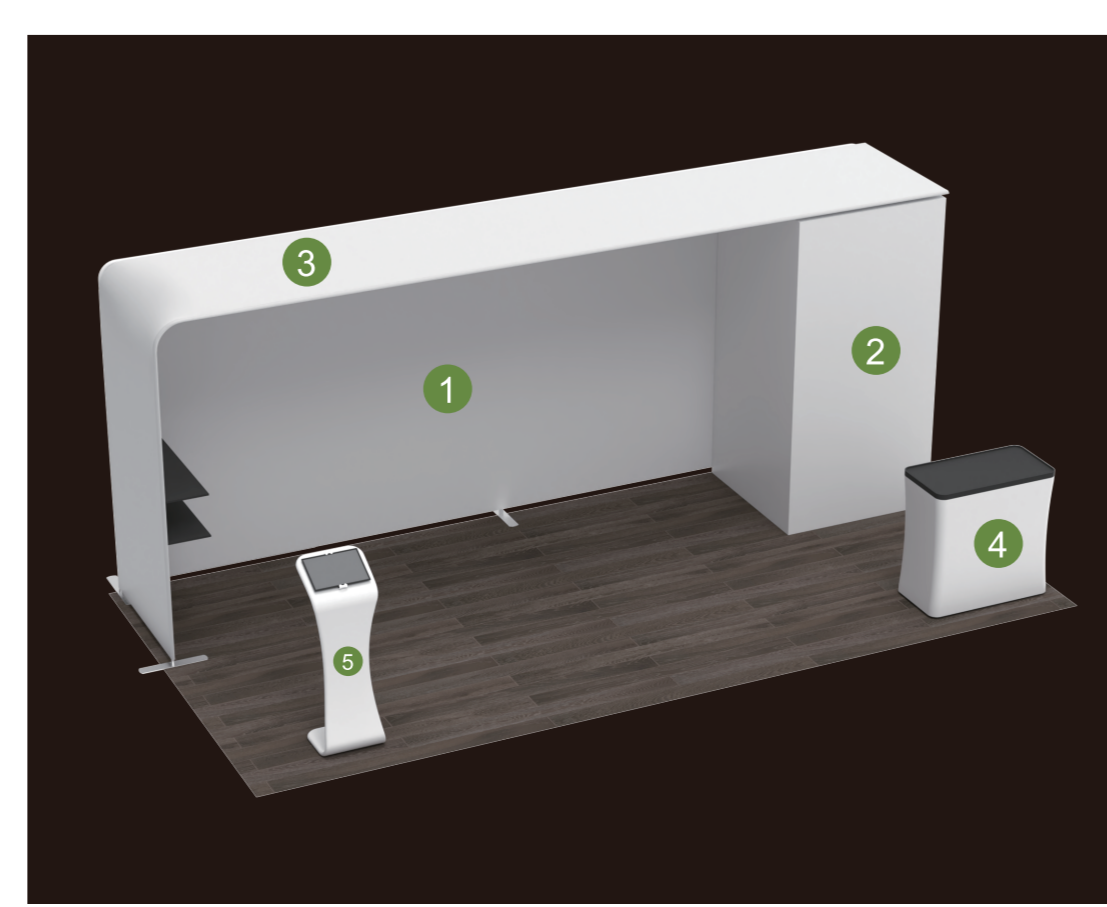
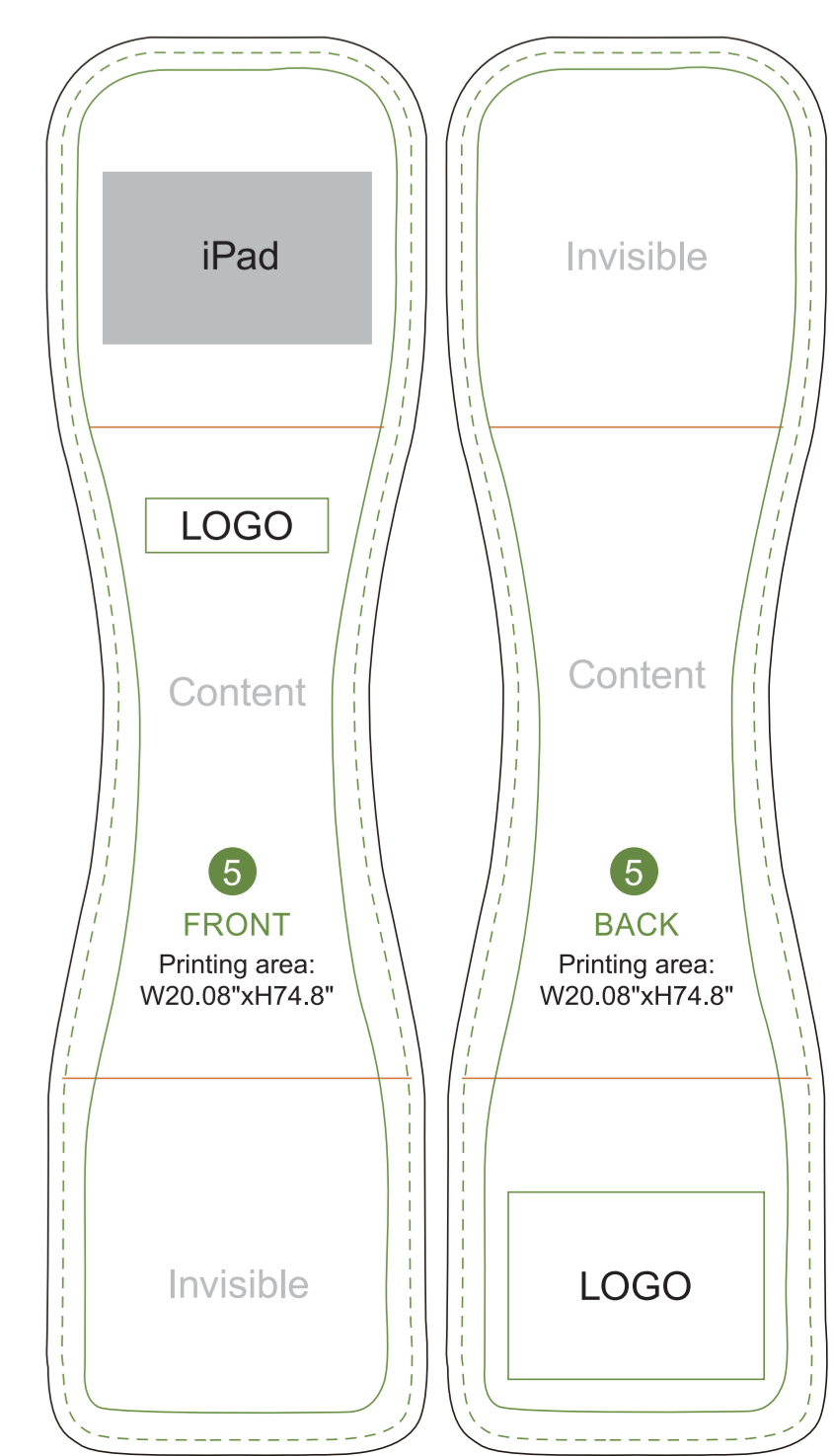
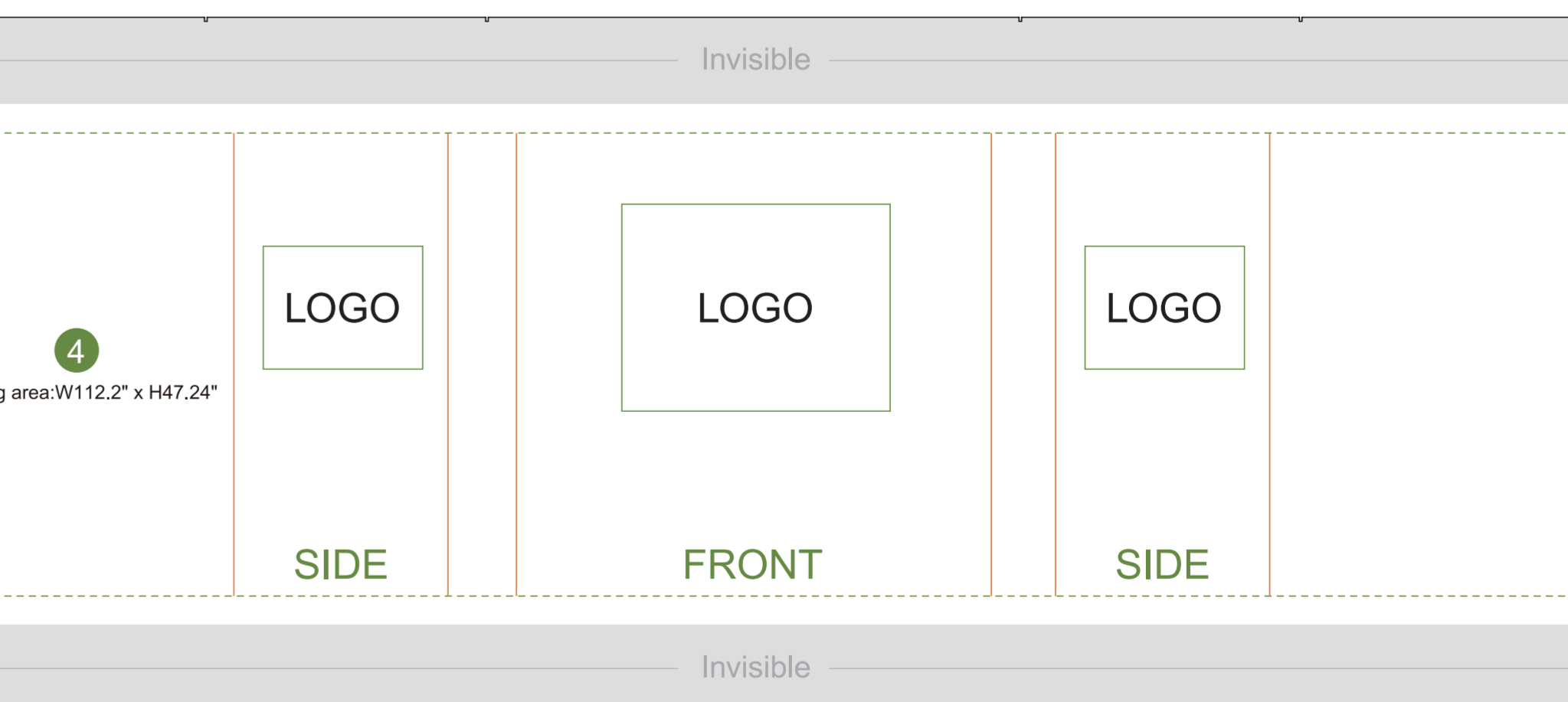
Printing area:  
W50.24" x H50.24"

**3**  
**OUTSIDE**

Printing area:  
W50.4" x H329.32"

**3**  
**INSIDE**

Printing area:  
W50.4" x H329.32"



**AOM Prime Print**

- Graphic Specifications:
- Use Provided Template: Follow template dimensions exactly
  - Resolution: 150 DPI minimum
  - Color Mode: CMYK (for print accuracy)
  - No Template Lines: Remove any template guidelines before submission
  - Images: Embed or link all images in the file
  - Fonts: Outline all fonts to avoid compatibility issues

- Accepted File Formats:
- Photoshop: .PSD, .PSB
  - Illustrator: .AI, .EPS
  - Flattened Files: .TIFF
  - Press Quality PDF: High-resolution PDF (preferred for print)

Color Matching Service:  
Please note that printed colors may vary slightly from what you see on screen.  
If color accuracy is critical, we recommend adding our Color Matching Service when placing your order.