

1
FRONT
Printing area:W243.3" x H91.73"

Bleed Line _____
Make sure to extend the background images or colors all the way to the edge of the black outline.
Trim Line _____
Be aware of Safe visible area & keep important images & text inside this line.(Anything left outside the green box may be cut off during trimming.)
Safe Line _____
Fold Line _____

1
BACK
Printing area:W243.3" x H91.73"

2
OUTSIDE
Printing area:W399.87" x H53.47"

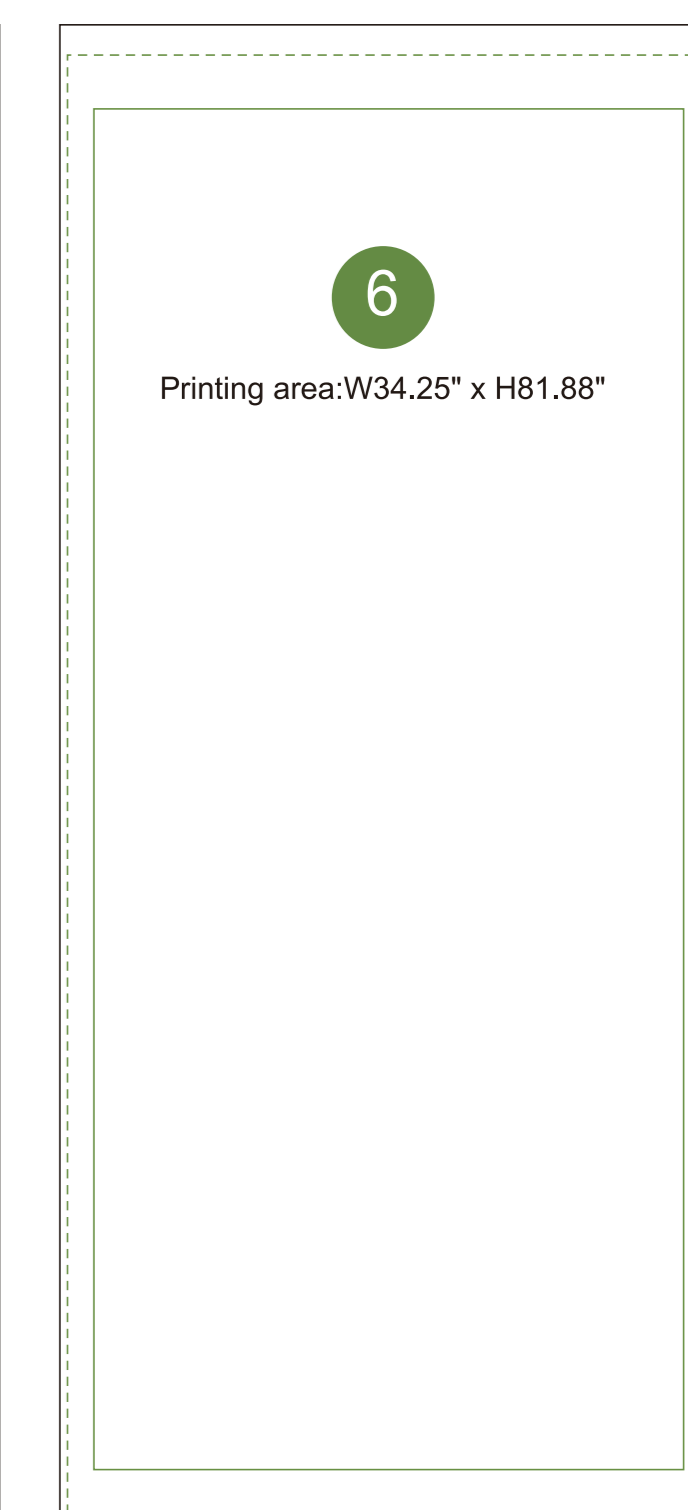
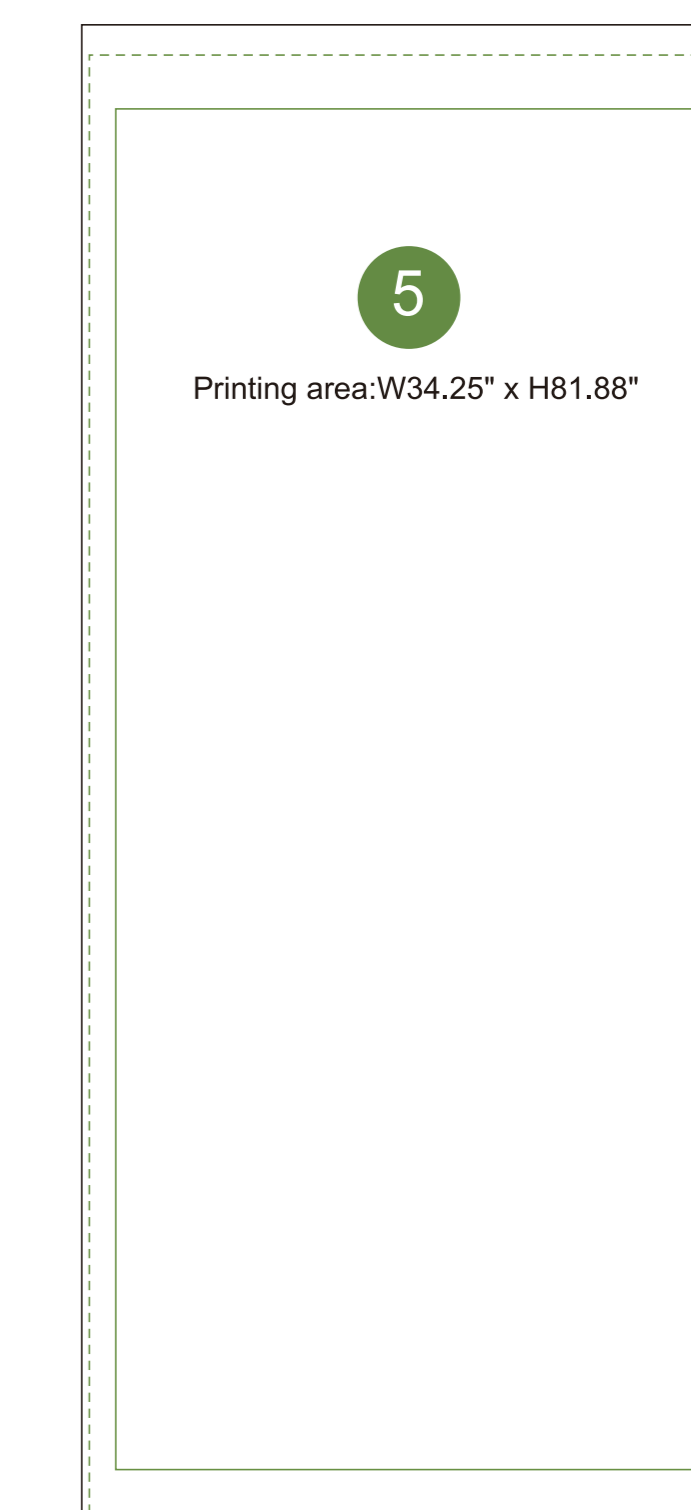
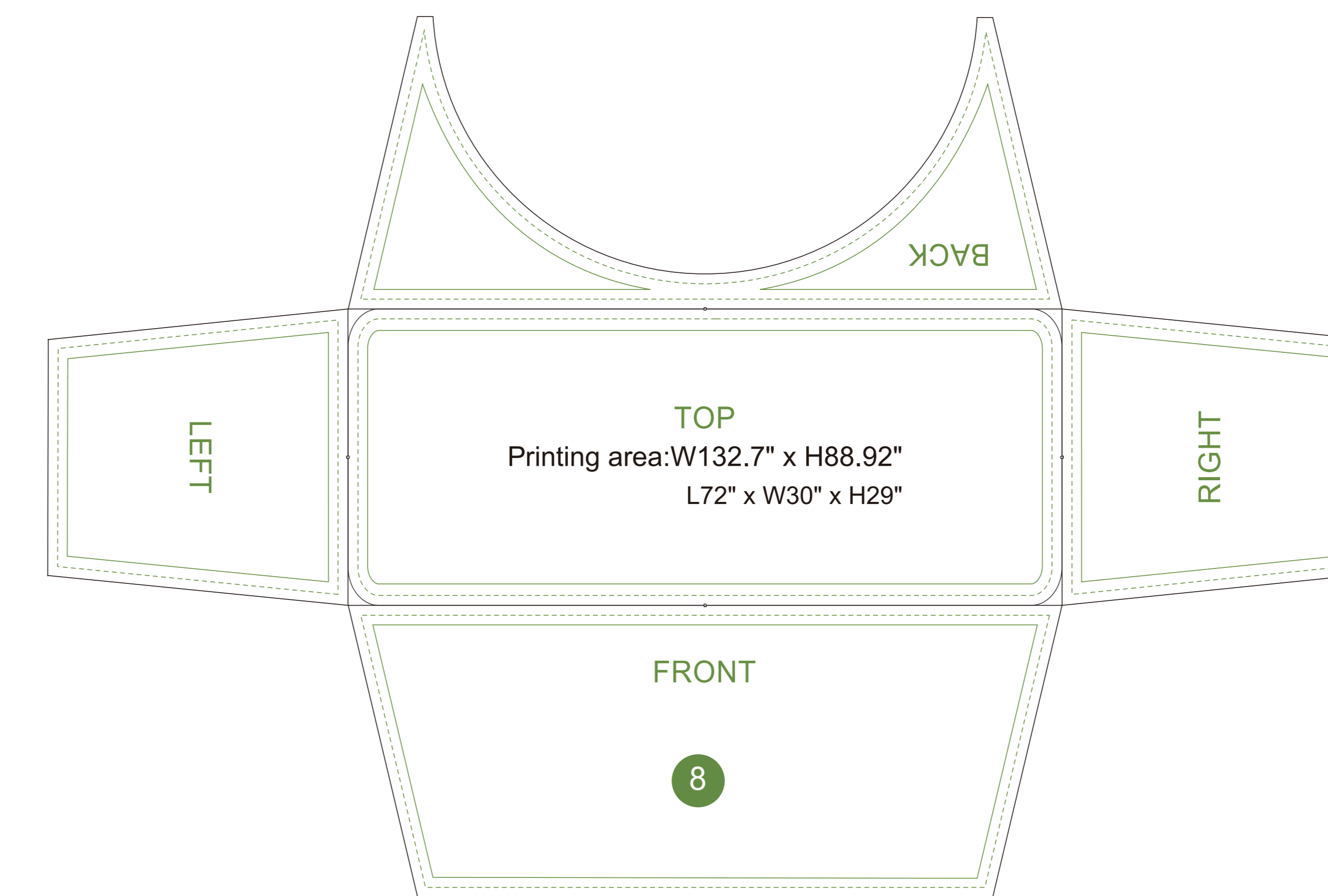
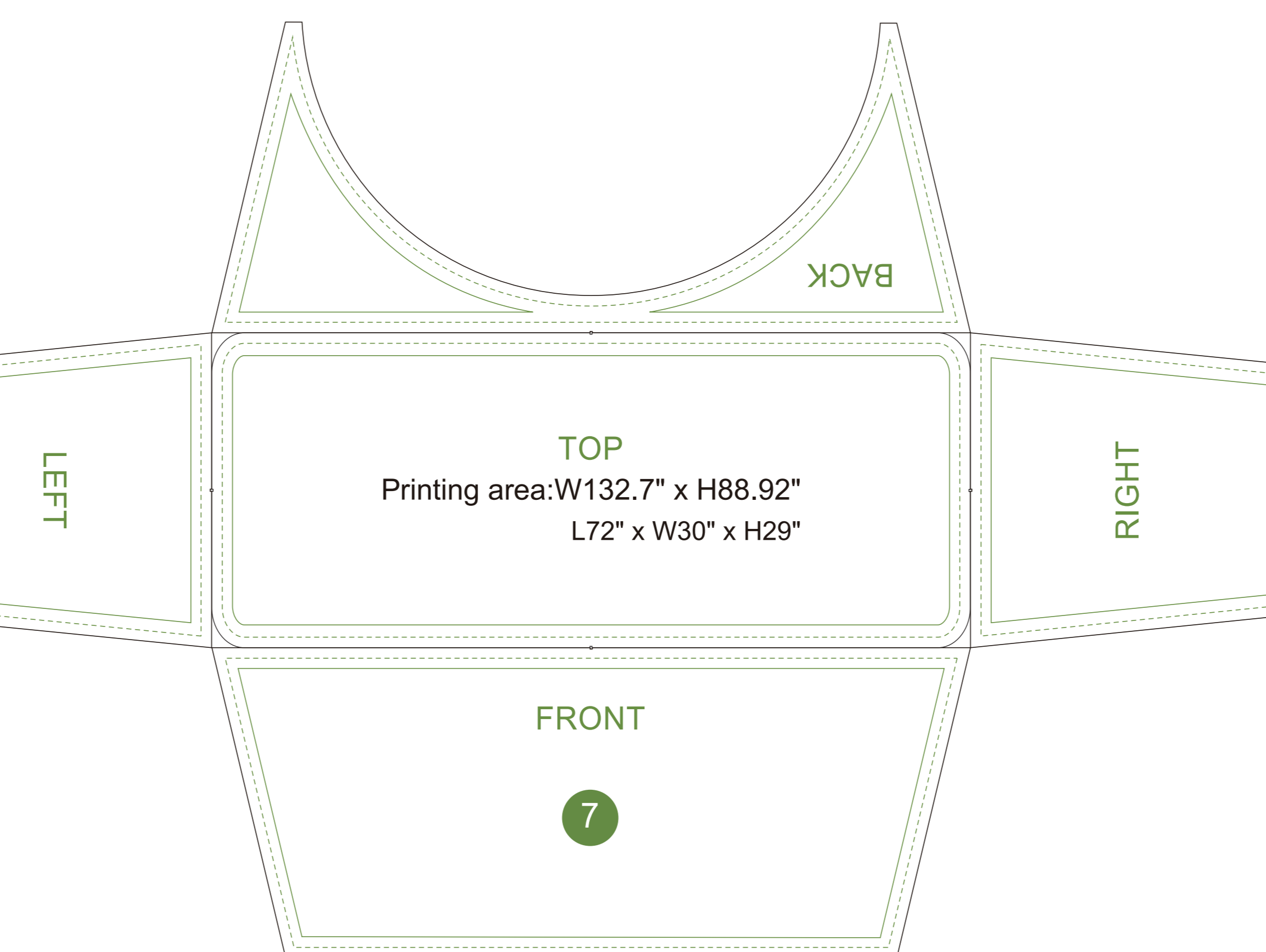
2
INSIDE
Printing area:W399.87" x H53.47"

3
FRONT
Printing area:W178.7" x H42.52"

3
BACK
Printing area:W178.7" x H42.52"

4
FRONT
Printing area:W178.7" x H42.52"

4
BACK
Printing area:W178.7" x H42.52"



AOM Prime Print

Graphic Specifications:

- Use Provided Template: Follow template dimensions exactly
- Resolution: 150 DPI minimum
- Color Mode: CMYK (for print accuracy)
- No Template Lines: Remove any template guidelines before submission
- Images: Embed or link all images in the file
- Fonts: Outline all fonts to avoid compatibility issues

Accepted File Formats:

- Photoshop: .PSD, .PSB
- Illustrator: .AI, .EPS
- Flattened Files: .TIFF
- Press Quality PDF: High-resolution PDF (preferred for print)

Color Matching Service:

Please note that printed colors may vary slightly from what you see on screen. If color accuracy is critical, we recommend adding our Color Matching Service when placing your order.

