

TOP Printing area:W113.54" x H13.77"

LEFT Printing area:W147.46" x H13.77"

RIGHT Printing area:W147.46" x H13.77"

1 FRONT Printing area:W111.29" x H144.71"

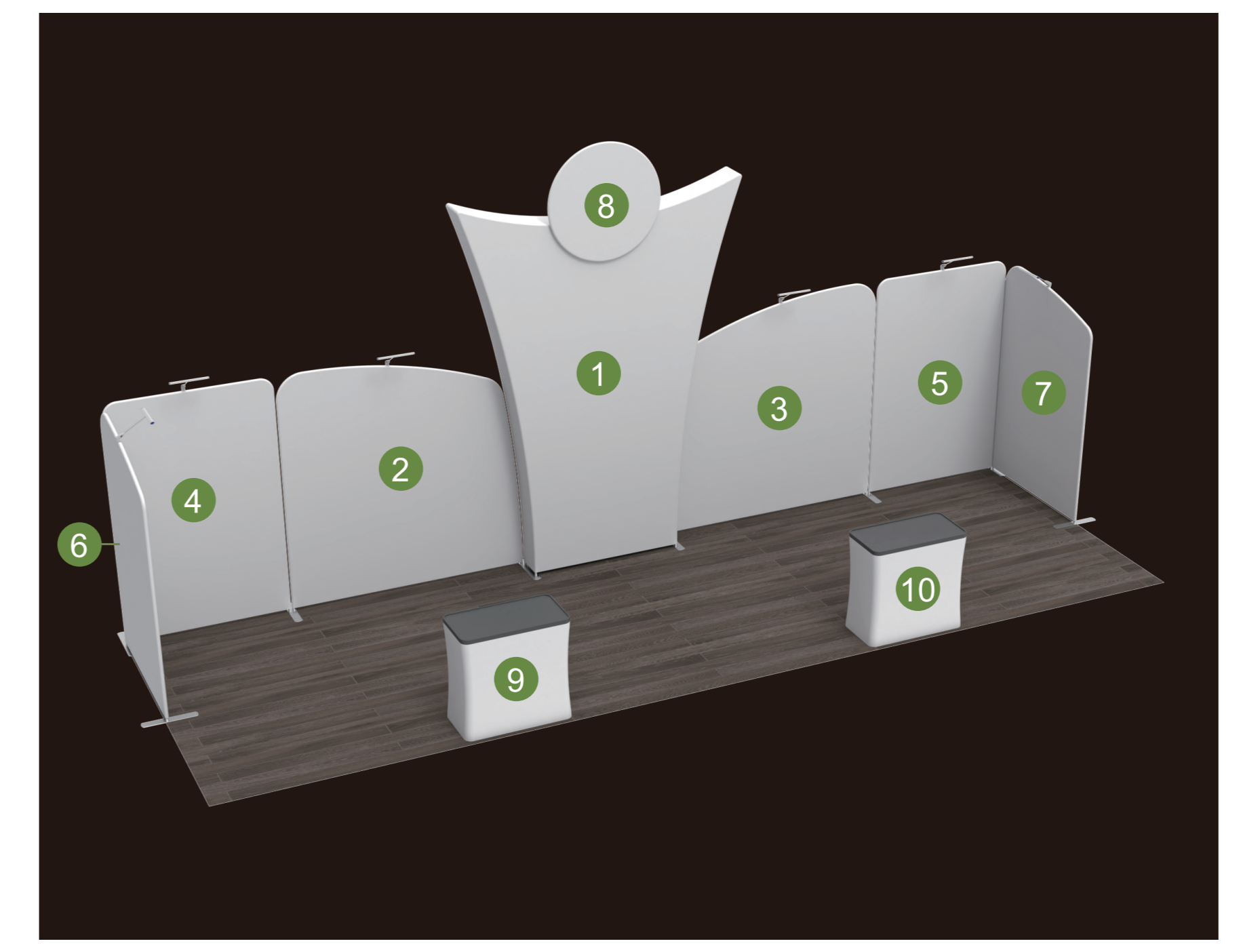
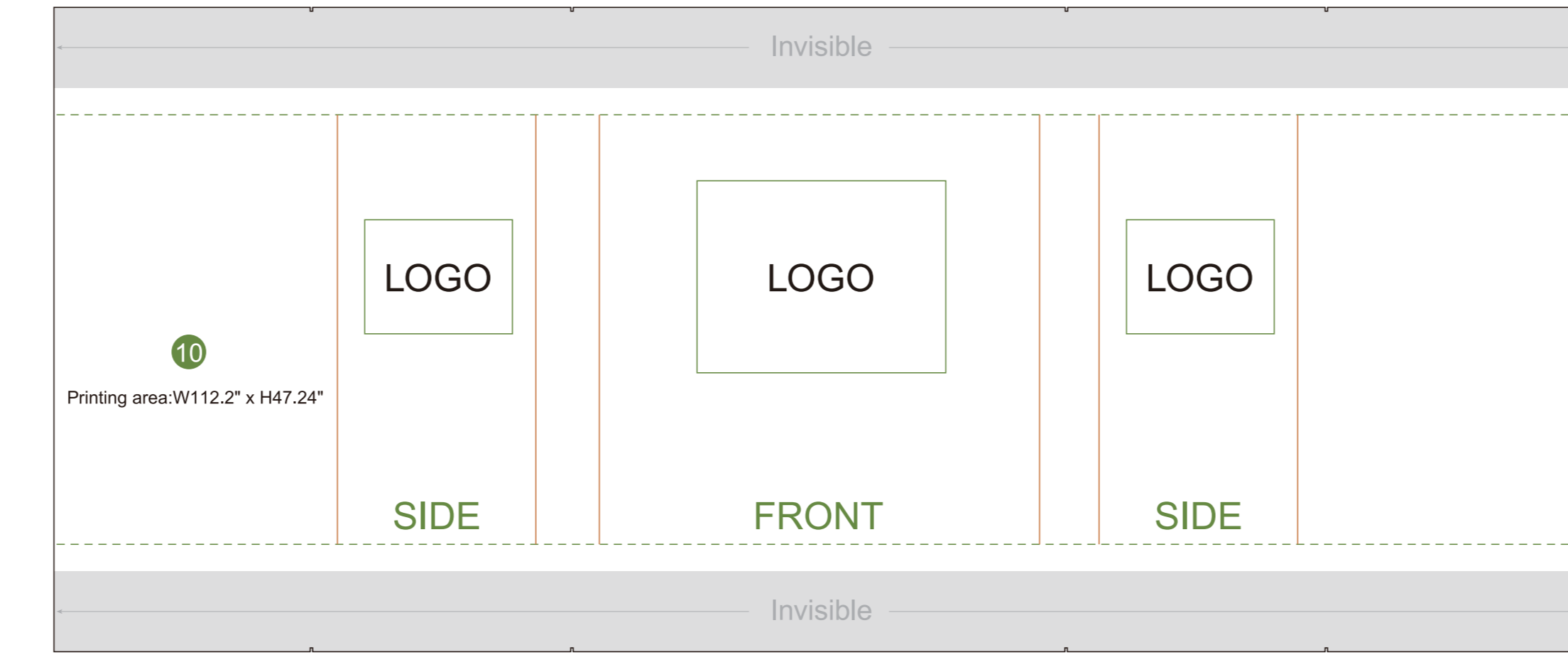
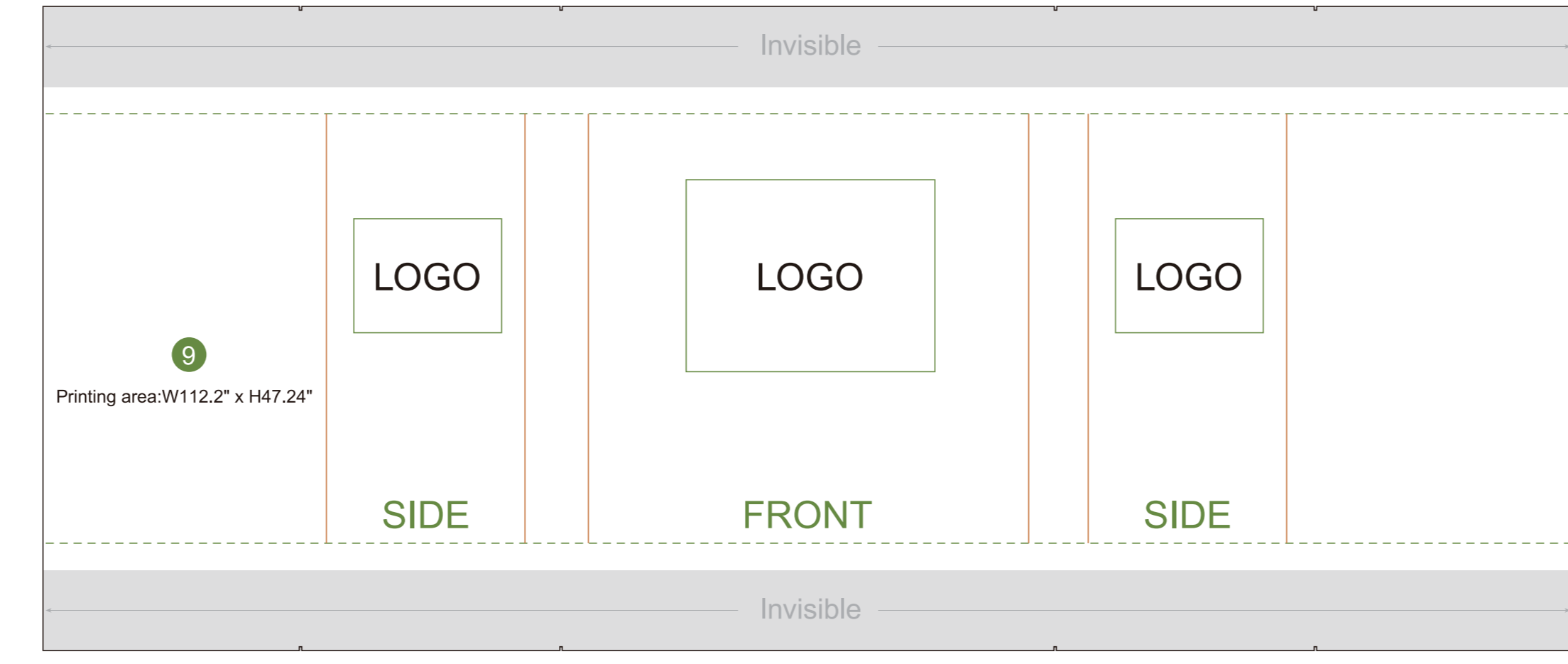
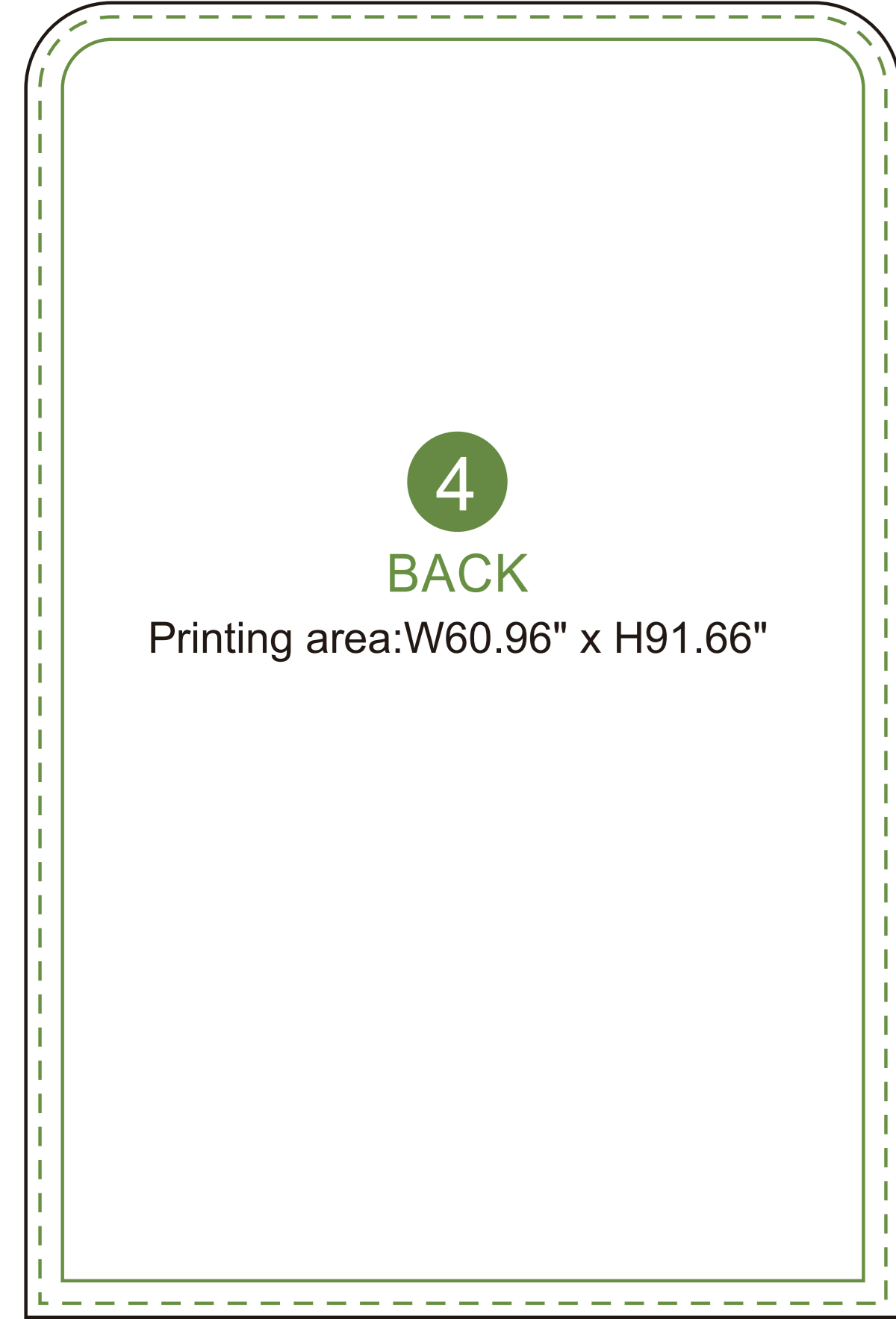
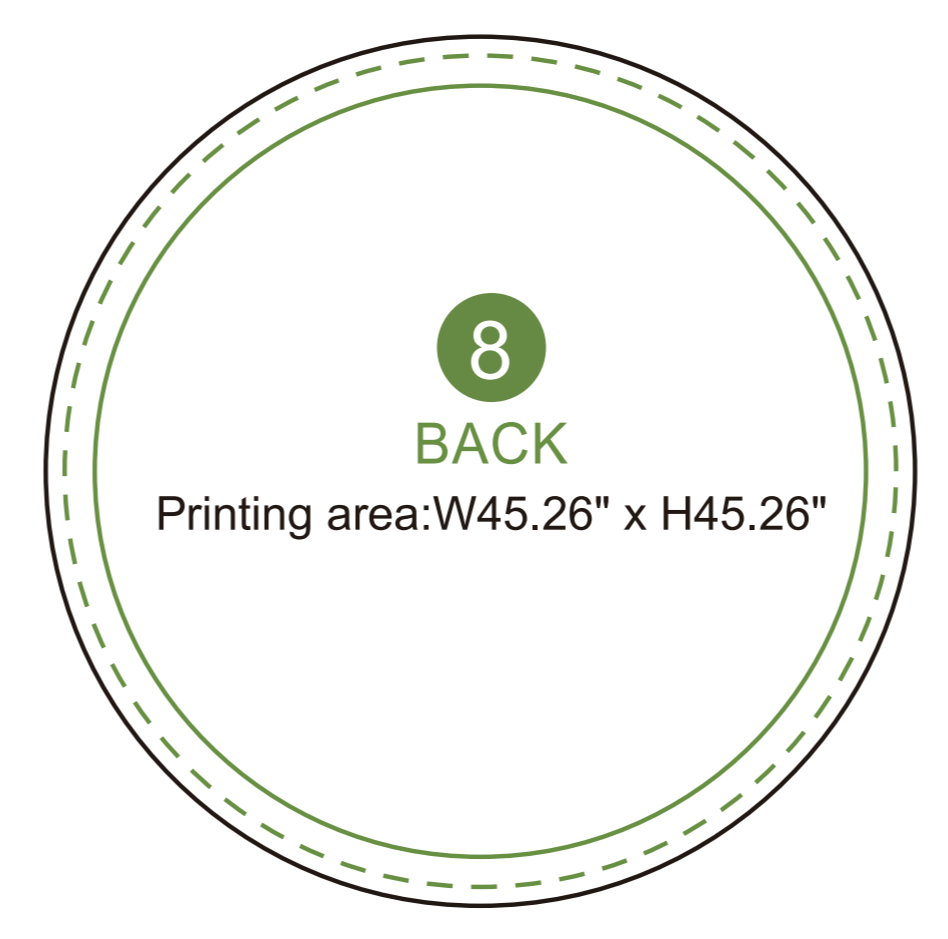
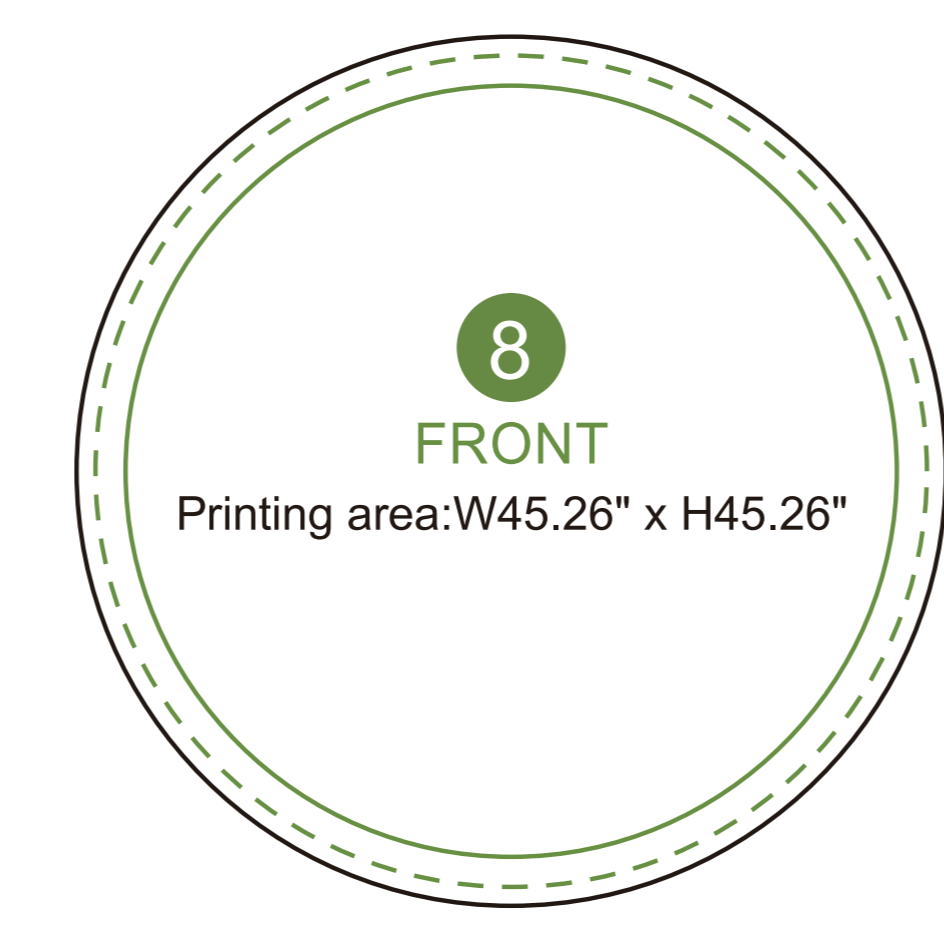
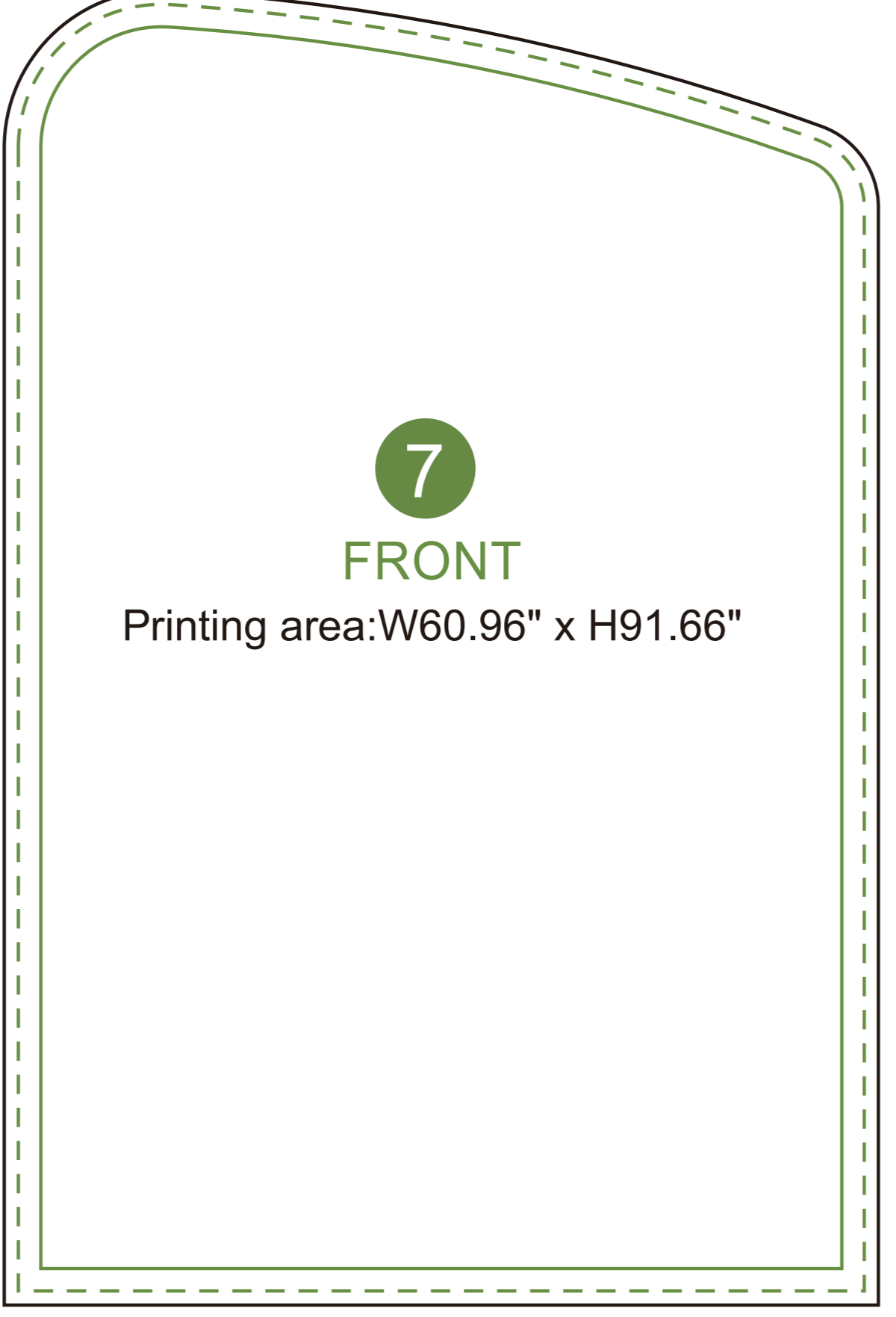
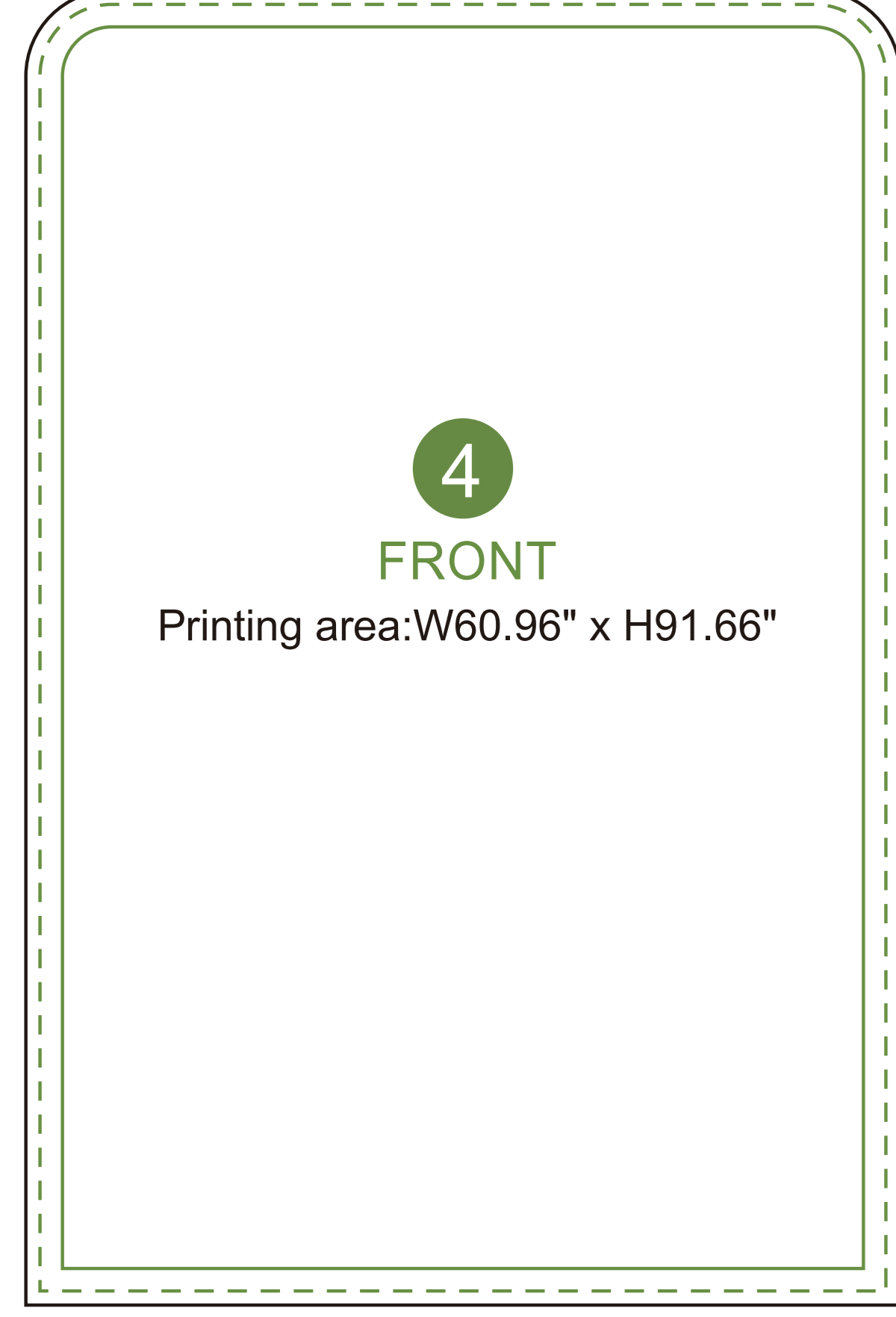
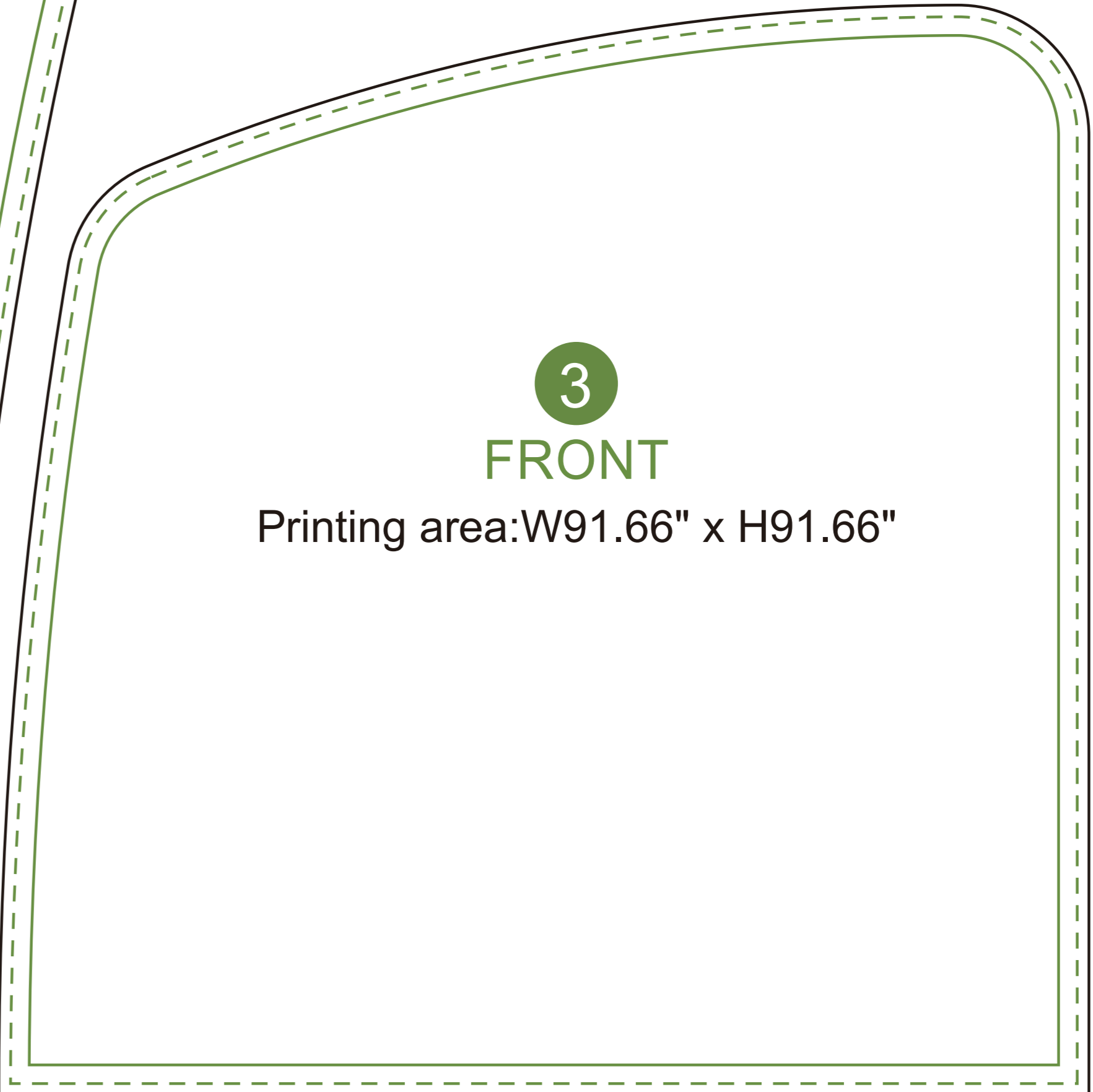
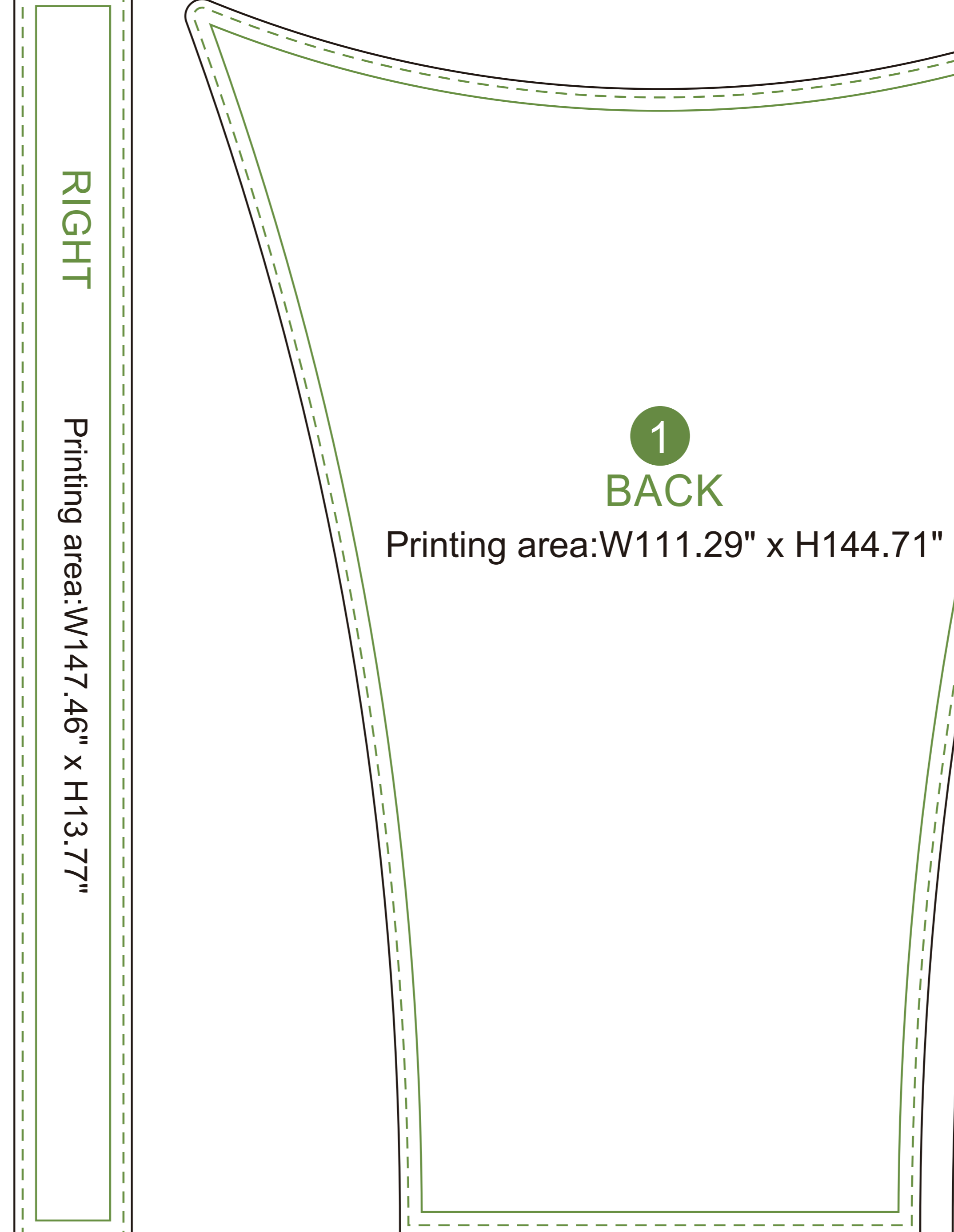
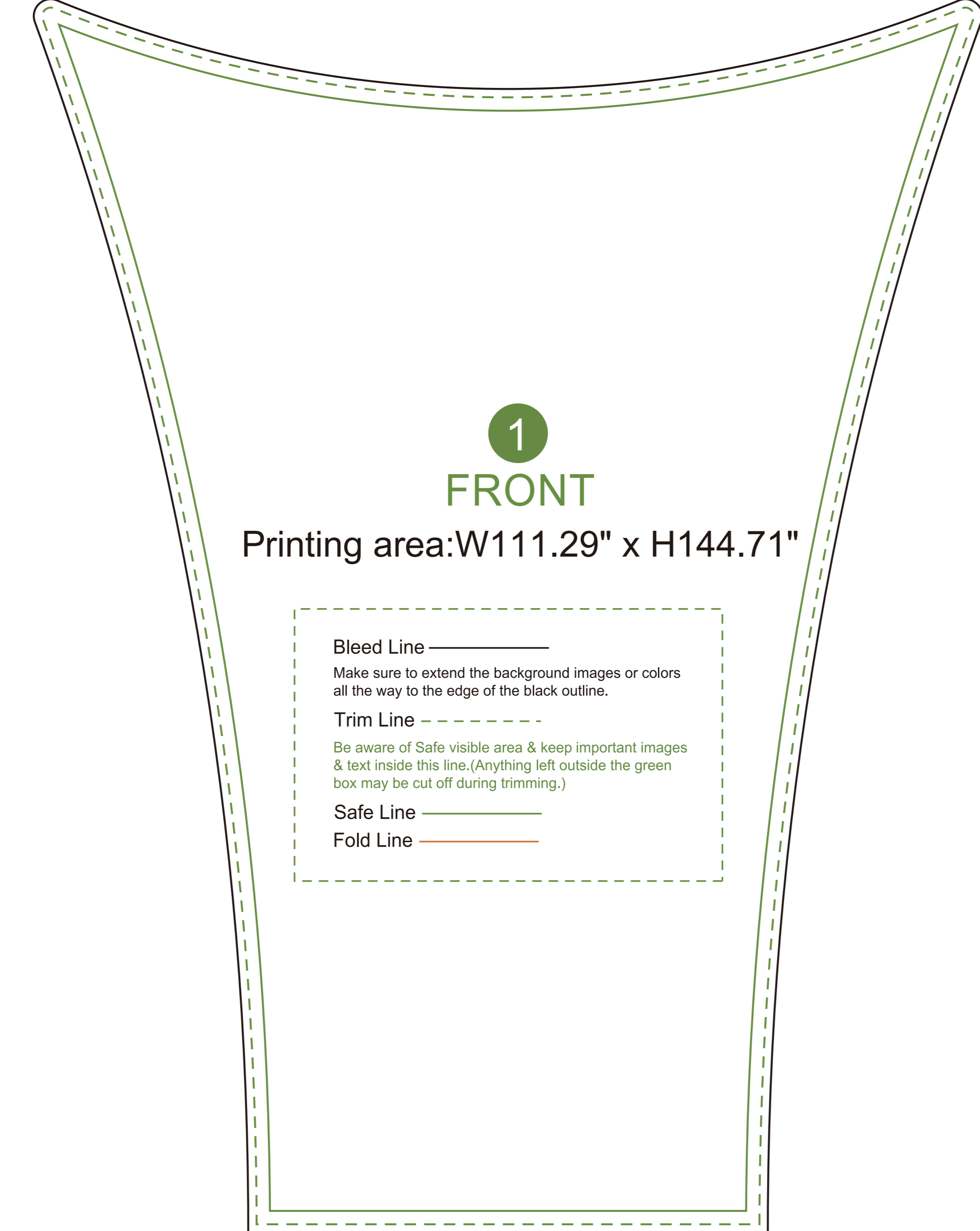
Bleed Line - Make sure to extend the background images or colors all the way to the edge of the black outline.
Trim Line - Be aware of Safe visible area & keep important images & text inside this line. (Anything left outside the green box may be cut off during trimming.)
Safe Line -
Fold Line -

1 BACK Printing area:W111.29" x H144.71"

3 FRONT Printing area:W91.66" x H91.66"

3 BACK Printing area:W91.66" x H91.66"

BOOTOM Printing area:W60.96" x H13.77"



AOM Prime Print

- Graphic Specifications:
- Use Provided Template: Follow template dimensions exactly
 - Resolution: 150 DPI minimum
 - Color Mode: CMYK (for print accuracy)
 - No Template Lines: Remove any template guidelines before submission
 - Images: Embed or link all images in the file
 - Fonts: Outline all fonts to avoid compatibility issues

- Accepted File Formats:
- Photoshop: .PSD, .PSB
 - Illustrator: .AI, .EPS
 - Flattened Files: .TIFF
 - Press Quality PDF: High-resolution PDF (preferred for print)

Color Matching Service:
Please note that printed colors may vary slightly from what you see on screen.
If color accuracy is critical, we recommend adding our Color Matching Service when placing your order.