

1

FRONT

Printing area:
W60.96" x H237.45"

1

BACK

Printing area:
W60.96" x H237.45"

2

FRONT

Printing area:
W60.96" x H237.45"

2

BACK

Printing area:
W60.96" x H237.45"

Bleed Line ————

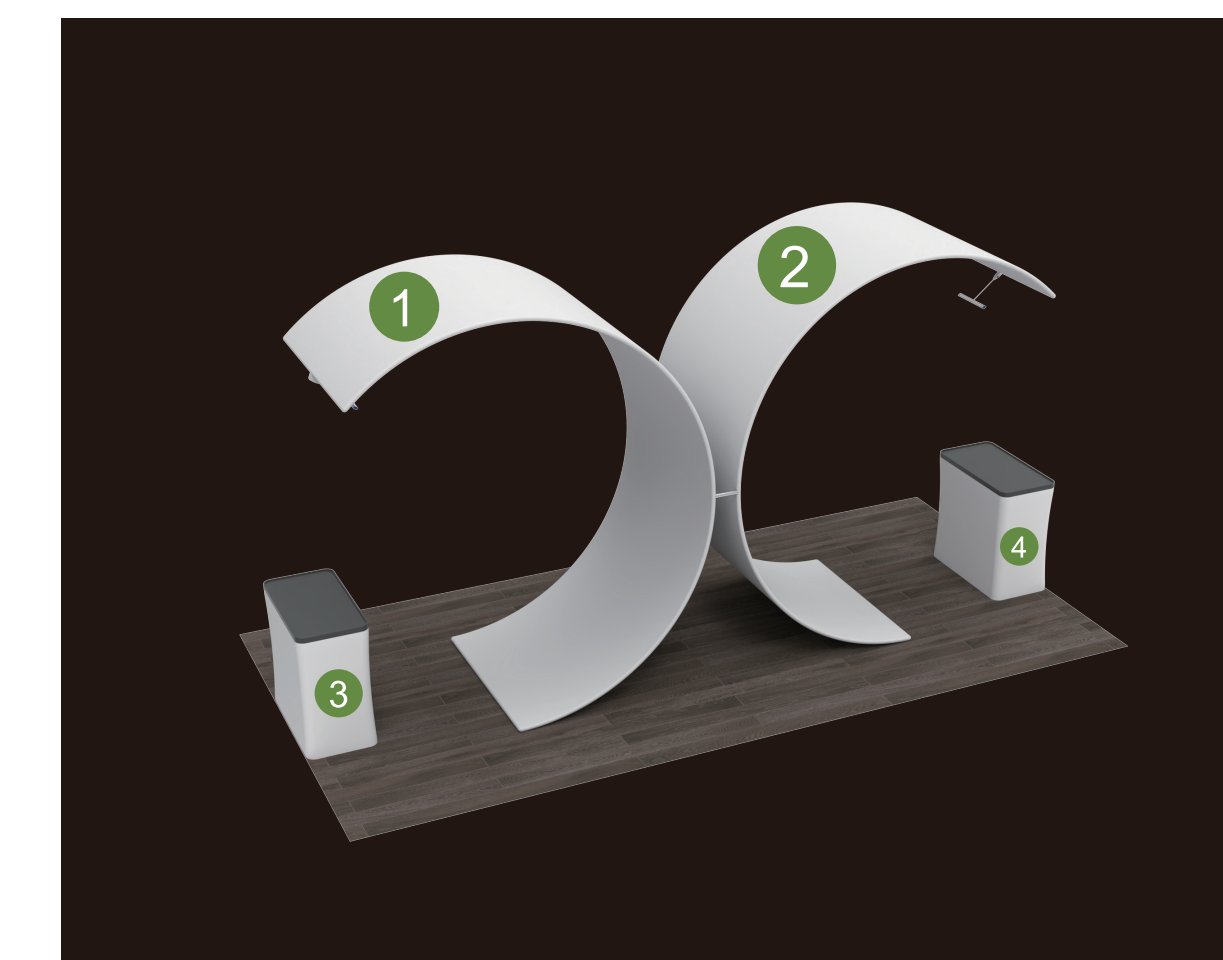
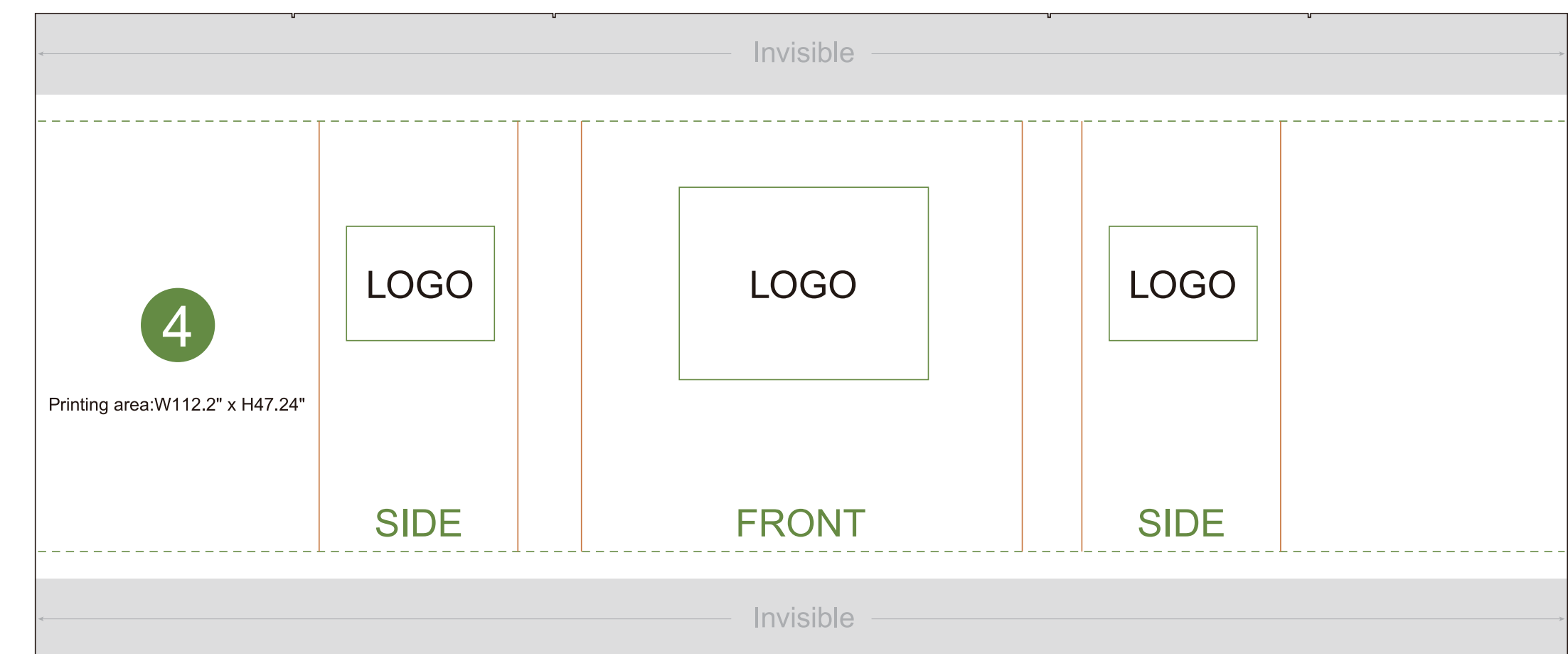
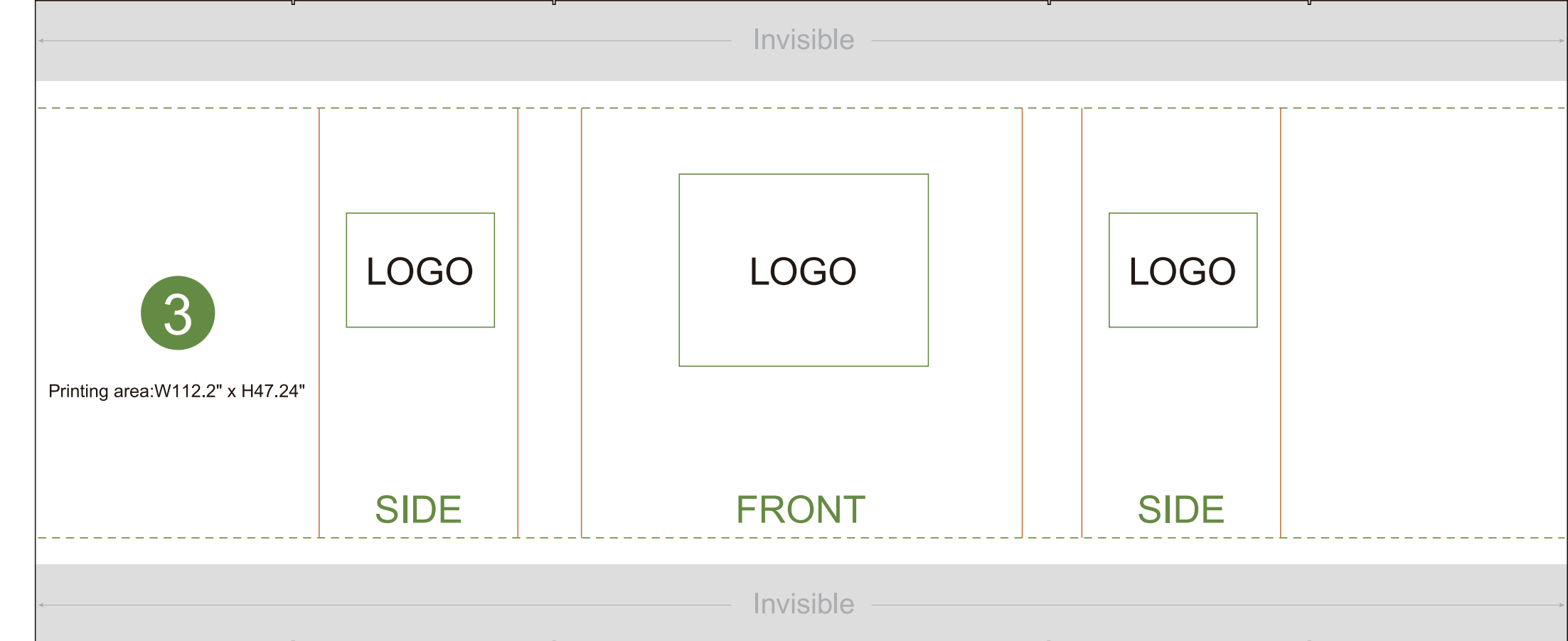
Make sure to extend the background images or colors all the way to the edge of the black outline.

Trim Line - - - - -

Be aware of Safe visible area & keep important images & text inside this line.(Anything left outside the green box may be cut off during trimming.)

Safe Line ————

Fold Line ————



AOM Prime Print

Graphic Specifications:

- Use Provided Template: Follow template dimensions exactly
- Resolution: 150 DPI minimum
- Color Mode: CMYK (for print accuracy)
- No Template Lines: Remove any template guidelines before submission
- Images: Embed or link all images in the file
- Fonts: Outline all fonts to avoid compatibility issues

Accepted File Formats:

- Photoshop: .PSD, .PSB
- Illustrator: .AI, .EPS
- Flattened Files: .TIFF
- Press Quality PDF: High-resolution PDF (preferred for print)

Color Matching Service:

Please note that printed colors may vary slightly from what you see on screen. If color accuracy is critical, we recommend adding our Color Matching Service when placing your order.