

1  
FRONT

Printing area: W241.95" x H91.66"

1  
BACK

Printing area: W241.95" x H91.66"

2  
FRONT  
Printing area:  
W75.41" x H104.31"

2  
BACK  
Printing area:  
W75.41" x H104.31"

3  
FRONT  
Printing area:  
W76.46" x H108.26"

3  
BACK  
Printing area:  
W76.46" x H108.26"

4  
FRONT  
Printing area:  
W77.52" x H112.18"

4  
BACK  
Printing area:  
W77.52" x H112.18"

5  
FRONT  
Printing area:  
W50.66" x H41.32"

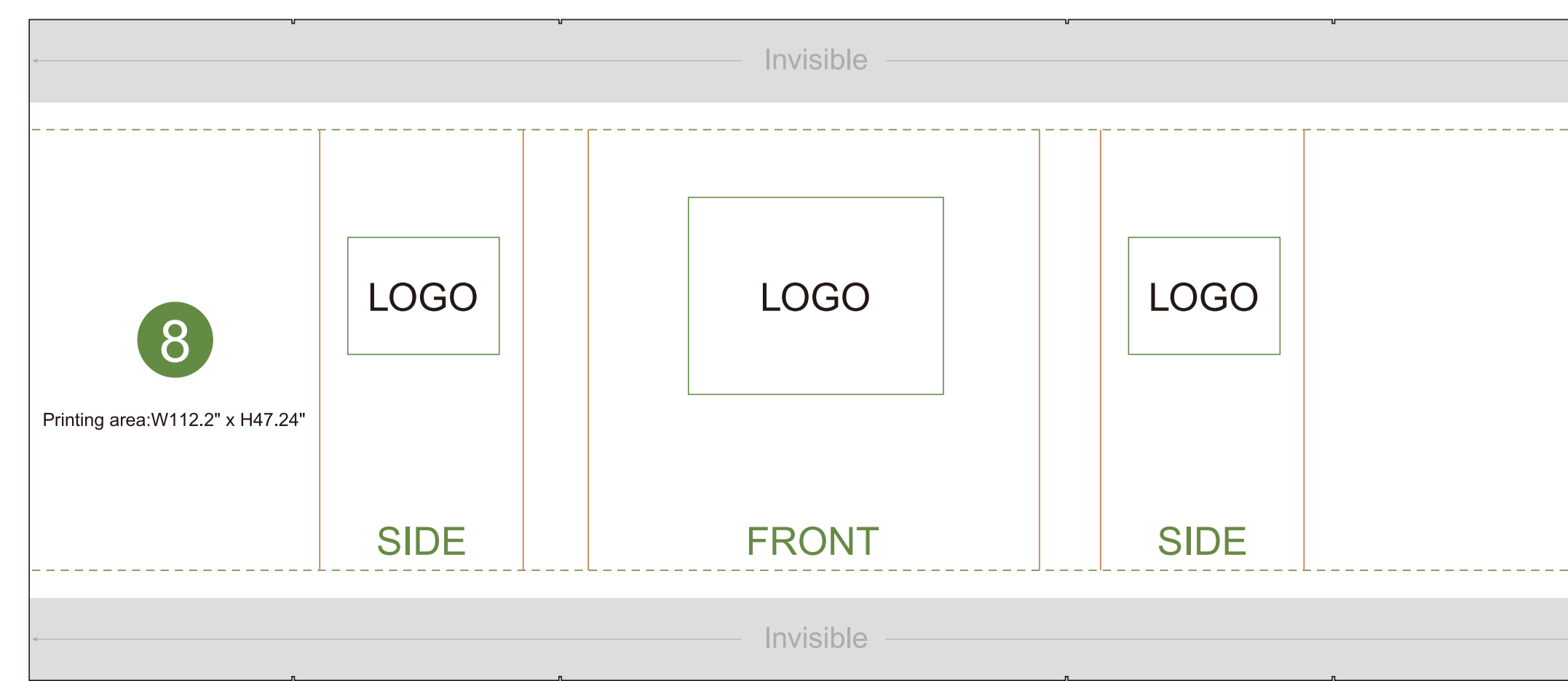
5  
BACK  
Printing area:  
W50.66" x H41.32"

6  
FRONT  
Printing area:  
W50.66" x H41.32"

6  
BACK  
Printing area:  
W50.66" x H41.32"

7  
FRONT  
Printing area:  
W50.66" x H41.32"

7  
BACK  
Printing area:  
W50.66" x H41.32"



**Bleed Line** —————

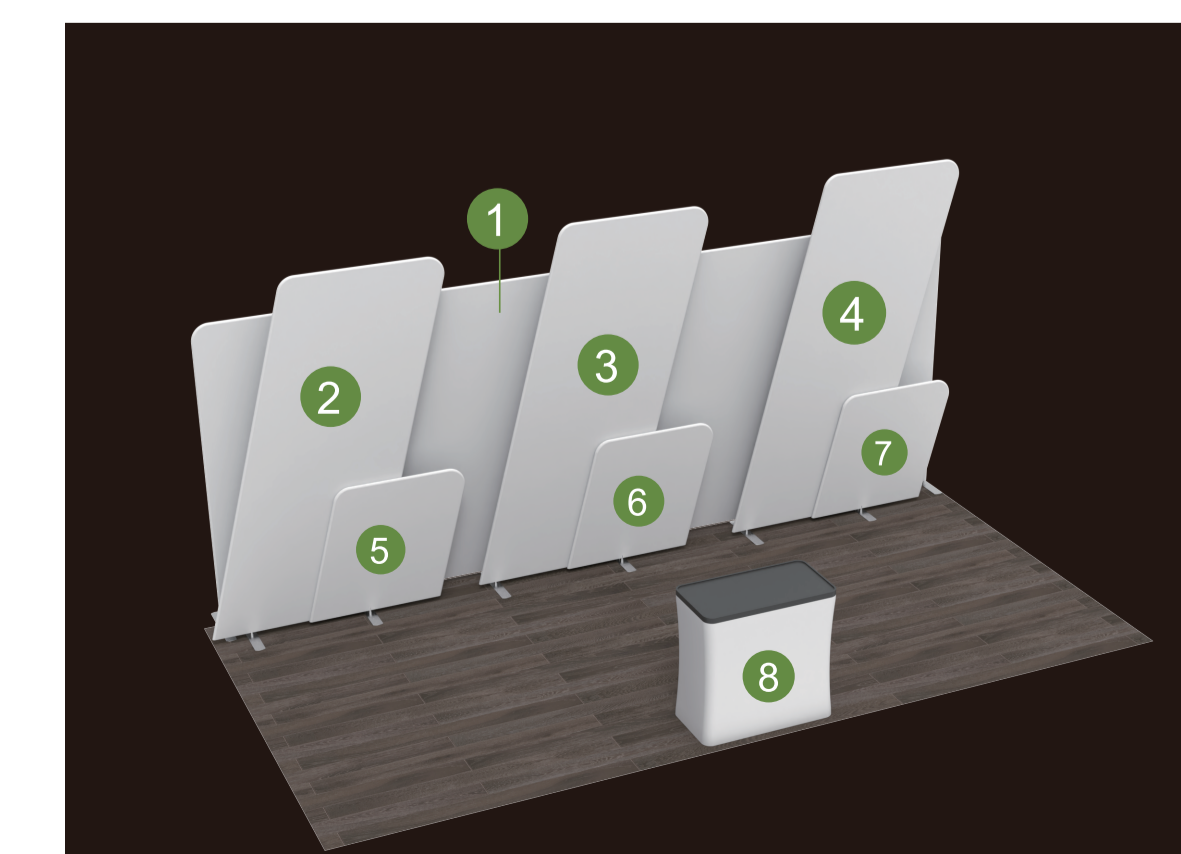
Make sure to extend the background images or colors all the way to the edge of the black outline.

**Trim Line** - - - - -

Be aware of Safe visible area & keep important images & text inside this line. (Anything left outside the green box may be cut off during trimming.)

**Safe Line** —————

**Fold Line** —————



**AOM Prime Print**

**Graphic Specifications:**

- Use Provided Template: Follow template dimensions exactly
- Resolution: 150 DPI minimum
- Color Mode: CMYK (for print accuracy)
- No Template Lines: Remove any template guidelines before submission
- Images: Embed or link all images in the file
- Fonts: Outline all fonts to avoid compatibility issues

**Accepted File Formats:**

- Photoshop: .PSD, .PSB
- Illustrator: .AI, .EPS
- Flattened Files: .TIFF
- Press Quality PDF: High-resolution PDF (preferred for print)

**Color Matching Service:**

Please note that printed colors may vary slightly from what you see on screen. If color accuracy is critical, we recommend adding our Color Matching Service when placing your order.