

1 TOP Printing area: W213.37" x H15.89"

1 LEFT Printing area: W15.89" x H156.96"

1

FRONT

Printing area: W239.16" x H155.79"

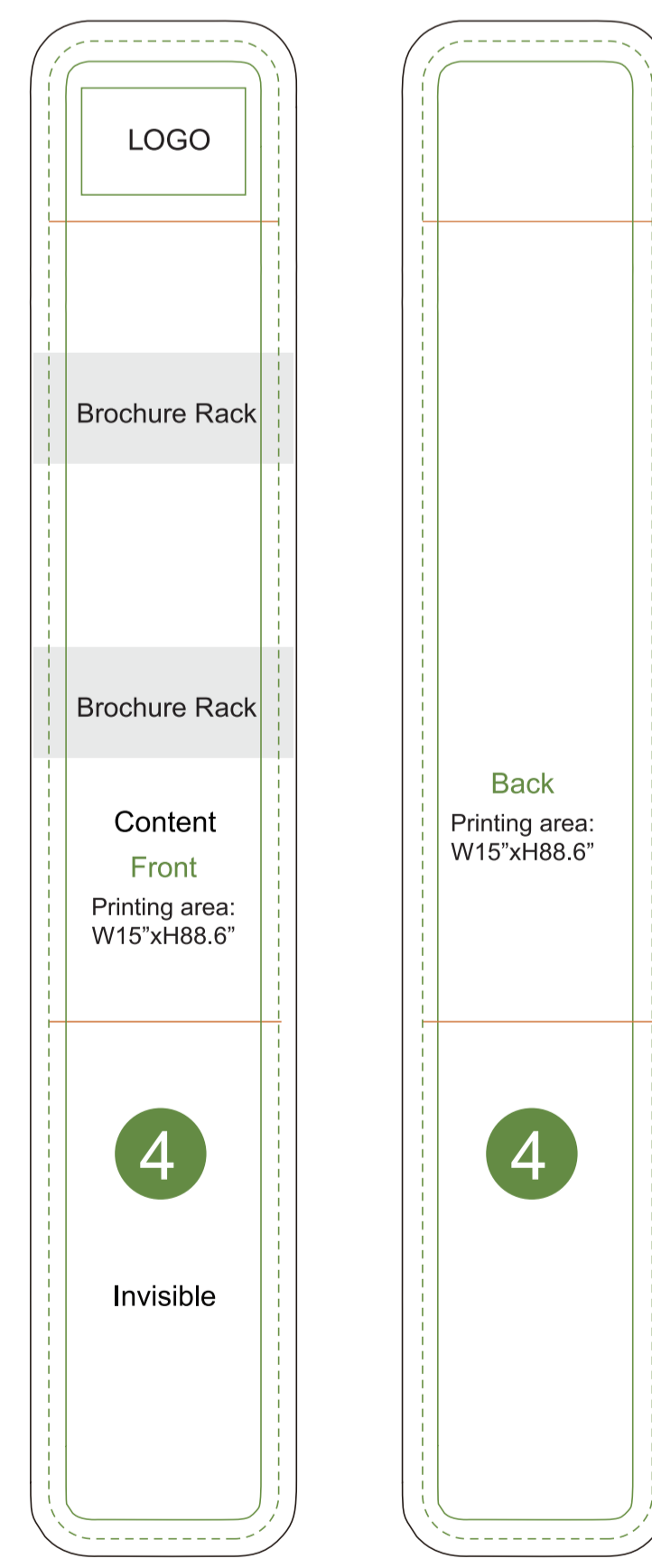
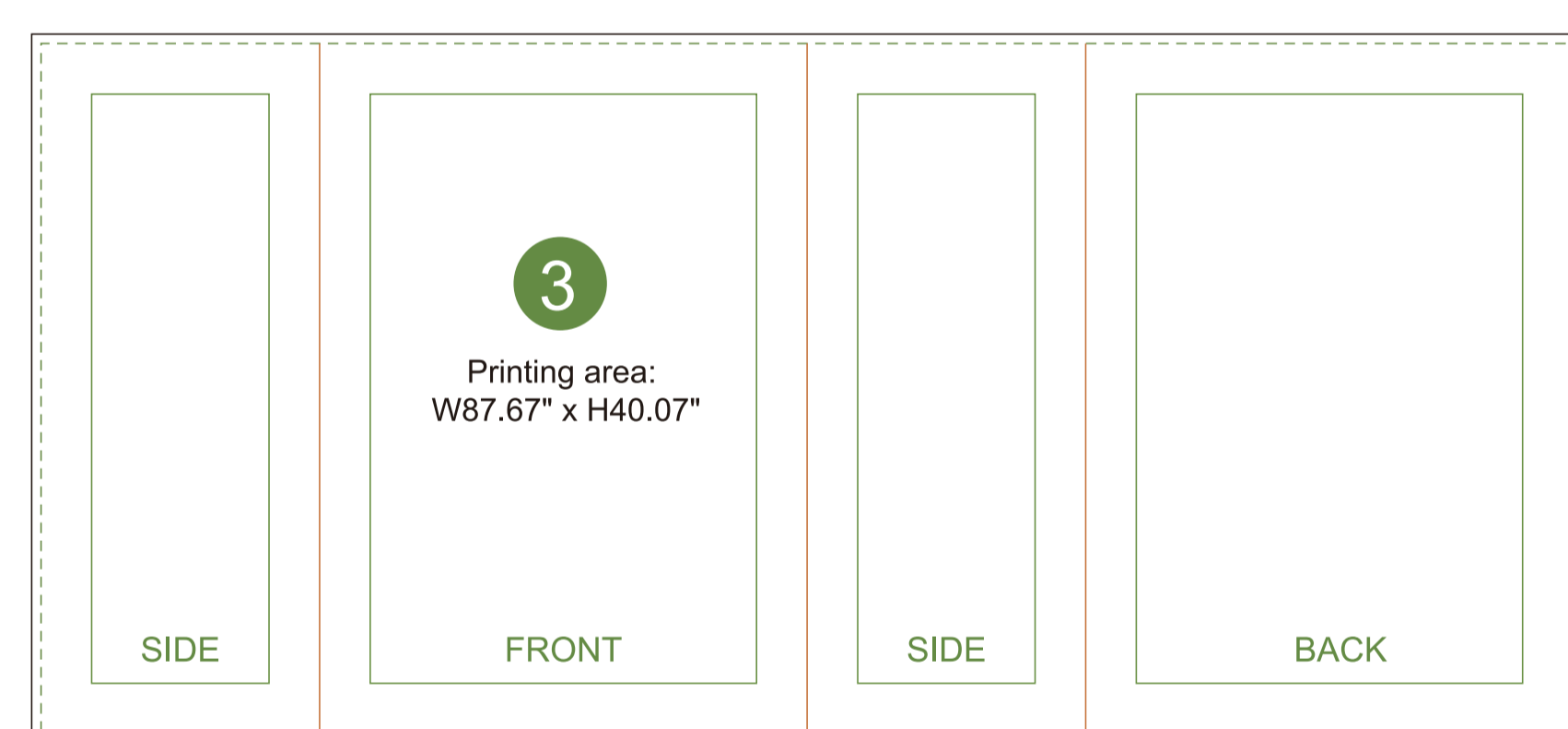
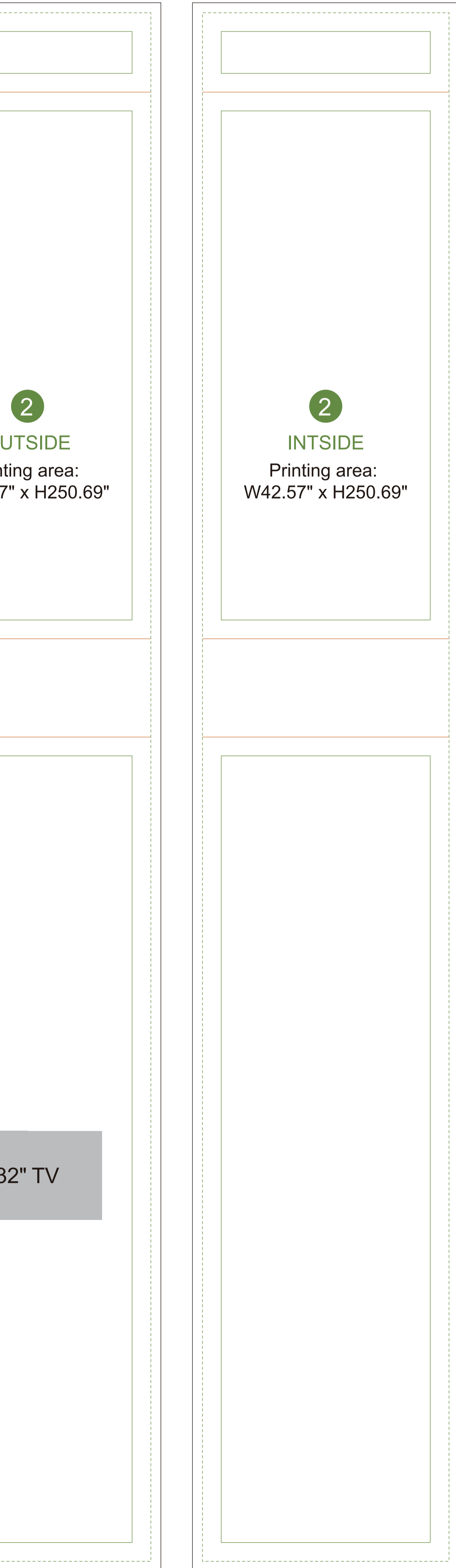
1 RIGHT Printing area: W15.89" x H121.69"

1

BACK

Printing area: W239.16" x H155.79"

1 BOTTOM Printing area: W220.32" x H15.89"

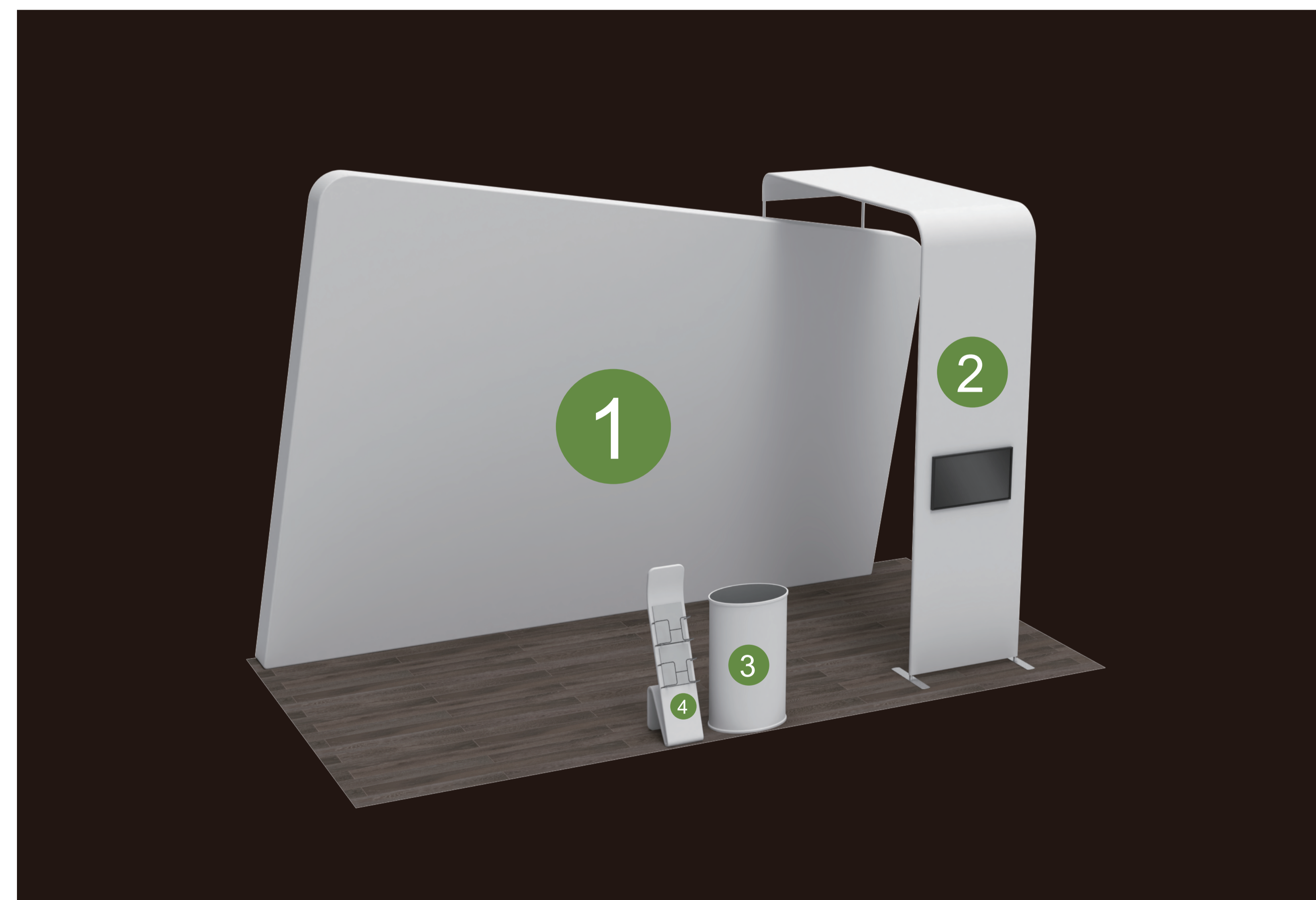


Bleed Line ————
Make sure to extend the background images or colors all the way to the edge of the black outline.

Trim Line - - - - -
Be aware of Safe visible area & keep important images & text inside this line.(Anything left outside the green box may be cut off during trimming.)

Safe Line ————

Fold Line ————



AOM Prime Print

Graphic Specifications:

- Use Provided Template: Follow template dimensions exactly
- Resolution: 150 DPI minimum
- Color Mode: CMYK (for print accuracy)
- No Template Lines: Remove any template guidelines before submission
- Images: Embed or link all images in the file
- Fonts: Outline all fonts to avoid compatibility issues

Accepted File Formats:

- Photoshop: .PSD, .PSB
- Illustrator: .AI, .EPS
- Flattened Files: .TIFF
- Press Quality PDF: High-resolution PDF (preferred for print)

Color Matching Service:

Please note that printed colors may vary slightly from what you see on screen. If color accuracy is critical, we recommend adding our Color Matching Service when placing your order.